

# FREE WEEKLY TRADER MAGAZINE

Vol. 26 No. 42  
JANUARY 23, 2020

800-543-8271 • 800-665-8875



Find us on  
Facebook

@myweeklytrader

Auctions - Pg. 18

MYWEEKLYTRADER.COM

**Honda**  
OF THE  
**OZARKS**

## ATV FINAL CLEARANCE!



2019 TRX420TM1K 4X2 RANCHER  
MSRP \$5,349

**SALE \$3,899**



2019 TRX420FM1K 4X4 RANCHER  
MSRP \$6,399

**SALE \$4,899**



2019 TRX500FM1K FOREMAN  
MSRP \$7,299

**SALE \$5,499**



2019 PIONEER 700 DLX  
SXS700M2DK  
MSRP \$12,299

**SALE  
\$9,999**



2019 PIONEER 1000/5 EPS  
SXS10M5PLK  
MSRP \$16,899

**SALE  
\$12,999**



**HondaOfTheOzarks.com**

**2055 E. Kerr - Springfield, MO I-44 Exit 80**

**(417)862-4686**

powersports.honda.com MSRP excludes destination charge. Visit Powersports.honda.com to view applicable destination charge amount. UTILITY ATVs ARE RECOMMENDED FOR RIDERS 16 YEARS OF AGE AND OLDER. ALL ATV RIDERS SHOULD TAKE A TRAINING COURSE AND READ THEIR OWNER'S MANUAL THOROUGHLY. MULTI-PURPOSE UTILITY VEHICLES CAN BE HAZARDOUS TO OPERATE. PIONEER IS ONLY FOR DRIVERS 16 YEARS AND OLDER. DRIVER AND PASSENGER MUST BE TALL ENOUGH FOR SEAT BELT TO FIT PROPERLY AND TO BRACE THEMSELVES WITH BOTH FEET FIRMLY ON THE FLOOR. PASSENGER MUST BE ABLE TO GRASP THE HANDHOLD. NEVER DRIVE WITH MORE THAN ONE PASSENGER. ALWAYS WEAR YOUR SEAT BELT, AND KEEP THE SIDE NETS AND DOORS CLOSED. ALL MUV USERS SHOULD WATCH THE SAFETY VIDEO "MULTIPURPOSE UTILITY VEHICLES: A GUIDE TO SAFE OPERATION" AND READ THE OWNER'S MANUAL BEFORE OPERATING THE VEHICLE. FOR BOTH TYPES OF VEHICLES, ALWAYS WEAR A HELMET, EYE PROTECTION AND APPROPRIATE CLOTHING. AVOID EXCESSIVE SPEEDS, AND BE CAREFUL ON DIFFICULT TERRAIN. FOR YOUR SAFETY BE RESPONSIBLE. NEVER DRIVE UNDER THE INFLUENCE OF DRUGS OR ALCOHOL, OR ON PUBLIC ROADS. RESPECT THE ENVIRONMENT WHEN DRIVING. Neither MSRP nor sale price include \$189 setup/PDI charge or \$400 destination fee for ATV. Neither MSRP nor sale price include \$229 setup/PDI charge or \$760 destination fee for Pioneer 700 Deluxe or \$870 destination fee for Pioneer 1000/5 EPS. Limited supplies. Call for availability.



# SAVINGS Kick Off The New Year In Style!



**HOFFMAN**  
Sofa, Love Seat  
& Recliner

**YOU CHOOSE**  
SOFA OR LOVE SEAT

**\$500** each

Recliners Only **\$350** each



**CAMARGO**  
Sofa, Love Seat &  
Recliner

\*FINANCING  
AVAILABLE

FIND **QUALITY**  
& **VALUE** JUST  
NORTH OF SPRINGFIELD

**LARGE  
SHOWROOMS**

\*WAC SEE  
STORE FOR DETAILS



**CANO**  
Sofa, Love Seat  
& Recliner

**\$695** Love Seat

**\$695** Sofa

**\$495** Recliner



FIND US ON FACEBOOK  
@QUARLESFURNITURE

**QUARLES**  
SUPPLY, INC.  
**FURNITURE**

3251 S. SPRINGFIELD AVE.  
BOLIVAR, MO 65613

**(417) 777-2391**

[WWW.QUARLESFURNITURE.COM](http://WWW.QUARLESFURNITURE.COM)



RESIDENTIAL FAMILY  
STARTING AT

**\$2,199**



*For Outstanding Products & Service*  
**AGRI-ENTERPRISES**

1-1/2 Miles South Of Licking, MO On Hwy 63  
573-674-2203 • 1-800-653-7152 • [www.agri-enterprises.com](http://www.agri-enterprises.com)

**REMINGTON BAIKAL:** 410-gauge, double barrel, silver receiver. \$500. 573-756-1065.

**RENTAL NEEDED ASAP:** Moving to area, and need rental house w/pasture for our horses. Leave message, 641-226-2431 or 573-578-6476.

**PLATFORM SCALES.** \$100. Sickle Grinder. \$25. 417-646-8807.

**BORDER COLLIE/AUSTRALIAN SHEPHERDS;** Ready 12/29/19. Also purebred Border Collies: Ready 01/04/20. Females \$150, Males \$100. 417-349-1386, Hartville.

**PAIR OF LOVE BIRDS:** 1 year old, with cage and accessories. 417-935-2635, Seymour.

**SMALL SQUARE BROME HAY:** 70LB, horse quality, delivery available. 417-532-6686, 417-531-6686.

**VOTED #1 BEST Preowned Car Dealership**

**TIM'S USED CARS**  
(573) 341-3828 • 1334 South Bishop (Hwy. 63) • Rolla, MO  
Next to Hwy. CC • [www.tims-used-cars.com](http://www.tims-used-cars.com)

	<p><b>2013 FORD F-150 XLT CREW CAB</b> 4X4, 5.0 V-8, POWER EQUIPPED, 90,XXX MILES. <b>ONLY \$18,800</b></p>		<p><b>2015 RAM 3500 BIG HORN CREW CAB</b> 4X4, 6.7 DIESEL, AUTO, LEATHER, NAVIGATION, 241,XXX MILES. <b>ONLY \$26,500</b></p>
	<p><b>2013 RAM 1500, QUAD CAB EXPRESS</b> 4X4, 152,XXX MILES, 5.7 HEMI, POWER EQUIPPED <b>ONLY \$14,500</b></p>		<p><b>2016 RAM 2500 TRADESMAN CREW CAB</b> 4X4, 6.4 HEMI, AUTO, POWER EQUIPPED, 67,XXX MILES. <b>PRICE TO SELL!</b></p>

**LARGE SELECTION OF CARS, TRUCKS, SUVs & VANS!**

**USED EQUIPMENT**

- Mahindra 5525 w/loader. Less than 100 hours.
- Mahindra 6075 w/loader, Cab, 4WD, Remainder 5 - 1/2 Year Powertrain Warranty. Low Hours
- Gehl Silage Chopper • 6' & 7' Brush Cutter
- JD 10' Cultipacker • 3pt. 3 bottom plow
- 12' Spring Tooth Harrow 3pt. 2 Disc Disc Plow

Other Misc Equipment

*For Outstanding Products & Service*  
**AGRI-ENTERPRISES**  
1-1/2 Miles South Of Licking, MO On Hwy 63  
573-674-2203 • 1-800-653-7152  
[www.agri-enterprises.com](http://www.agri-enterprises.com)

**HOLLYWOOD 4-BIKE HITCH MOUNT RACK:** Excellent condition, Includes (2) Allen Stabilizer tension bars and keyed alike locking hitch pin and cable. \$175. Conway, 417-718-5347.



# Offering the Area's LOWEST METAL PRICES!



Custom Homes • Metal Roofs

**29 Gauge**

**#1 PAINTED METAL**

- ★ Lifetime Warranty - \$70.00 Sq.
- ★ 40 Year Warranty - \$67.00 Sq.
- ★ 20 Year Warranty - \$64.00 Sq.
- ★ 25 Year Galvalume - \$54.00 Sq.

Labor prices will be higher in locations over 75 miles from Marshfield, MO

1049 SCHOOLVIEW DR.  
Marshfield, MO



*Marshfield*  
**BUILDINGS**  
www.marshfieldbuildings.com

## Pole Barn Packages

24'x32'x10' materials only	\$5,300	30'x60'x10' materials only	\$8,950
24'x40'x10' materials only	\$6,075	40'x60'x12' materials only	\$12,100
30'x40'x10' materials only	\$6,825		

**Plus Sales Tax And Delivery.**  
Labor available at additional cost.  
Call for quote.

**Compare Before You Buy.**

**We Use Only The Highest Quality Materials!**

ALL MATERIAL PACKAGES INCLUDE...

- ✓ #1 Yellow Pine Lumber
- ✓ #1-40 Yr. Painted
- ✓ Metal w/Screws
- ✓ 1-10' Overhead Door
- ✓ 1-36" Entry Door

**Fully Insured**



**PORTABLE BUILDINGS**

Rent to Own  
No Credit Check



**417-859-7744**

**TAKUCHI 135 EXCAVATOR:** \$15,000.  
573-765-4406.

**LOT OF 72: "The Antiques Journal" Magazines, years- 1974-75, 1978-80, Mar-Dec 1977, Jan-Feb 1981. \$30 for all. Grovespring, 417-533-9484.**

**GLIDER ROCKING CHAIR:** Mint condition, green cushion. \$40 firm. Gerald, 573-764-4435.

**4X5 ROUND BALES BROME HAY:** in barn, no weeds, horse hay. \$45/bale. Sullivan, 573-259-3216.

**10 FOLDING TABLES:** for yard sale maybe. \$100. 573-327-9068.

**SMALL SQUARE HAY BROME:** Clean horse quality. \$6/bale. Timothy Brome Mix. \$5/bale. Big squares second cutting Brome. \$60/bale. Versailles, 573-378-7326.

**DAEWOO FORKLIFT**

**Model GC25S-2**  
Serial No 06-02352

- Propane
- Hook attachment
- Everything works great
- Always kept in a building

*Call for more information!*

**417-532-9131 • LEBANON**



**WEEKLY TRADER MAGAZINE**

Vol. 26 January 23, 2020 No. 42

*Published By*

**Lebanon Publishing Co. Inc.**  
PO Box 192, Lebanon, MO 65536

**417-532-2800**

**www.myweeklytrader.com**

Everything advertised in this publication must be made available for purchase, use or patronage without regard to race, creed, color, sex, age or national origin of the purchaser, user or patron. The Publisher will not be responsible for misinformation, misprints, typographical errors, etc. Opinions expressed are not necessarily those of the Publisher. All rights reserved. No part of this material may be reproduced by any means without permission in writing from the Publisher. We reserve the right to refuse any ad if we deem necessary. Our list and map indicate counties in which the Weekly Trader is delivered. The magazine is not necessarily placed in all communities in a particular county. A list of all retail drops for a county may be obtained by contacting the Weekly Trader office at PO Box 192, Lebanon, MO 65536.



**SECOND & THIRD CUTTING** Fescue & Clover: 5x5.5 Round bales, stored inside. \$65. Wet wrapped Rye: 5x4.5 Bales. \$50. Third & Fourth Cutting Alfalfa & Orchard Grass: 2x3 square. \$50. Small Square \$8. NO Rain. Versailles, 573-378-4974.

**ACOUSTIC ALVAREZ GUITAR:** W/electric pick-up, w/hard case. \$200 or trade. Gerald. 573-764-4435.

**DINING TABLE & 4-CHAIRS:** like new. \$200. 417-531-1116.

**BLACK SIDE-BY-SIDE FRIDGE:** GE. \$175obo. Halfway, 417-327-5606. No Sunday Calls Please.

**VILLA HOMES IN ROLLA:** Has NEW and USED Mobile Homes. Call David for info: 573-578-8072.

# GET YOUR WORK DONE, AMERICA

FOR JUST  
**\$243** PER MONTH\*



## 4540 2WD

- ✓ **SIMPLE** to operate
- ✓ **ECO-FRIENDLY**, NO DPF engine
- ✓ **HEAVY-DUTY** steel construction not plastic

MAHINDRA 4540 41HP, 2WD, TRACTOR AND LOADER.

## Marshfield Machinery Inc.

222 E. Madison • Marshfield, MO 65706

417-859-2117 • [www.marshfieldmachinery.com](http://www.marshfieldmachinery.com)



\*Payment is for tractor and loader only and is calculated at 10% down and 84 months financing. With approved credit. Program restrictions may apply. See dealer for details. All offers expire January 31, 2020.

WORLD'S #1 SELLING TRACTOR

**Mahindra**  
Tractors

### NEW MAHINDRA TRACTORS

7085 4WD & LDR 85HP	IN STOCK
6075 4WD & LDR 71HP	IN STOCK
2655 4WD CAB & LDR 55HP	IN STOCK
2655 4WD, BACKHOE 55HP	IN STOCK
2655 4WD & LDR 55HP	IN STOCK
4540 4WD & LDR 41HP	IN STOCK
4540 2WD & LDR 41HP	IN STOCK
2638 4WD & LDR 38HP	IN STOCK
1626 4WD & LDR 26HP	IN STOCK
MAX26XL & LDR 26HP	IN STOCK

### USED TRACTORS

MAHINDRA 105P CAB LDR 105HP	45,500
MAHINDRA MAX26XL LDR 26HP	12,500
MAHINDRA MAX22 W/ BACKHOE	11,500
MAHINDRA EMAX22 LDR 22HP	10,000
CASE IH 485 LDR 43HP	8,500
FORD 5000 LDR 60HP	8,500
MF 135 W/LDR 36HP	5,500
MF 150 38HP	4,500
CASE IH 235 W/ MOWER 18HP	3,500
IHC 184 W/ MOWER 18HP	3,500

### USED SIDE BY SIDES

MAHINDRA 750 CREW XTV	8,500
MAHINDRA 750 XTV	7,500

### USED ROUND BALERS

MF 2846A 4X6 MESH	20,000
MF 2745 4X5 MESH	12,500
HESSTON 745 4X5	7,500
HESSTON 555 4X6	4,500
HESSTON 560 5X6	4,000
HESSTON 550 4X6	3,500
NH 850 5X5	1,500
MF 224 SQUARE BALER	2,500

### USED RAKES

SITREX 12WHEEL	3,500
DURABUILT 8 WHEEL	1,950
VERMEER WR20 8 WHEEL	1,950
M&W 8 WHEEL	1,500

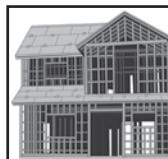
### USED NOTIL DRILLS

HAYBUSTER 107C DRILL	17,500
----------------------	--------

### USED MISC.

RHINO 12FT FLEX WING	8,500
BUSH HOG 3008 8FT 3PT	3,000

Marshfield Machinery Inc.  
222 E. Madison • Marshfield, MO 65706  
417-859-2117  
[www.marshfieldmachinery.com](http://www.marshfieldmachinery.com)



## MIDWEST CONSTRUCTION

Free Estimates!

- Pole Barn • Garages • Framing
- Remodels • Roofing • Concrete
- Decks & Porches

**Contact Abner Glick**  
**417-664-1794**

**ROME 8FT OFFSET DISK:** \$3,750. 573-765-4406.

**COMMERCIAL MEAT SLICER:** Toledo scale, model-5401. \$500obo. 573-374-1307.

**IHC 806 DIESEL TRACTOR:** Turbo, W.F. 3pt. \$8,950. 573-765-4406.

**WANTED:** 1966-1977 Ford Bronco. 816-838-6254.

**PYRENEES/ANATOLIAN PUPPIES:** currently in training, parents are excellent sheep/guard dogs. \$250. 417-322-0161.

**WANTED OUTSIDE WOOD FURNACE:** Used. Also, 3pt 6' Brush Hog. 636-239-4124.

**MEDIUM CHEST DEEP FREEZE:** works good. \$50. 417-531-1116.

## KUSTER LOGGING

**BUYER of Standing  
Timber  
Oak and Walnut**

**Dozing Now Available**

**417-259-0047**

**References Available**



**MONEY MAKER 21 NEW BLACK MAX GENERATORS:** In boxes. 4,500 start watt. 3,600 run watt. \$5,250. 417-399-6383.

**MASSEY FERGUSON 50.** Good condition. \$2,295. Rt 66 Tractor Repair, Old Hwy 66, St James, MO. 573-263-2732.

**RARE 1937 CIVILIAN CONSERVATION CORPS (CCC) 7TH CORPS AREA OFFICIAL MANUAL.** \$20. 417-532-2045, Lebanon (Leave Phone Number).

**DIAMOND BASEBALL CATCHERS GLOVE:** Like new. \$95obo. 573-374-1307.

**NICE PAIR OF 1" BELTA DRIVING LINES:** for team of horses. \$50 for set. 417-718-5347, Conway.

**HAY FOR SALE:** Small square, 4x5 round & 4x6 round bales. Licking, 573-578-7210.



# LINDSAY CHEVROLET USED CAR & TRUCK DEPT.

330 W. ELM • LEBANON, MO 417-532-3114 MON.-FRI. 8-6:30 • SAT. 8-5 • Close Time 6:30



Joe Jeffery, Manager • Nikki Keller, Finance, Brent Snook, Frankie Dublin & Tina Riesinger, Kathy Landon, Sales — Not responsible for typos.

## CARS

LC28910	<b>2018 BUICK REGAL PREMIUM</b> White, 2.0L Turbo, Air Cond, Sunroof, Leather, Loaded GM Program Vehicle..... <b>\$17,800</b>
LC28835A	<b>2016 BUICK VERANO</b> Silver, 2.4L 4cyl, Air Cond, Loaded Local Trade..... <b>\$13,700</b>
LC28894	<b>2016 BUICK VERANO SPORT TOURING</b> Maroon, 2.4L 4cyl, Air Cond, Leather, Loaded Off Lease Vehicle..... <b>\$14,800</b>
LC28763A	<b>2015 CADILLAC ATS LUXURY</b> Silver, 2.5L 4cyl, Air Cond, Leather, Loaded Local Trade with 28XXX Miles ... <b>\$16,800</b>
LC28912	<b>2016 CADILLAC ATS LUXURY</b> Black, 2.0L Turbo, Air Cond, Leather, Loaded GM Off Lease Vehicle .. <b>\$17,900</b>
LC28816	<b>2019 CHEVROLET CAMARO LT</b> Orange, 3.6L V6, Air Cond, Loaded Off Lease Vehicle ..... <b>\$23,500</b>
LC28959	<b>2016 CHEVROLET CRUZE LIMITED LT</b> Red, 1.4L Turbo, Air Cond, Loaded Off Lease Vehicle ..... <b>\$12,900</b>
LC28935	<b>2016 CHEVROLET CRUZE LIMITED LT/RS</b> Black, 1.4L Turbo Air Cond, Leather, Spoiler, Loaded GM Program Vehicle .... <b>\$15,500</b>
LC28974	<b>2018 CHEVROLET CRUZE LT</b> Blue, 1.4L Turbo, Air Cond, Loaded GM Program Vehicle ..... <b>\$17,900</b>
LC28951	<b>2017 CHEVROLET CRUZE LT FWD</b> Blue Met, 1.4L Turbo, Air Cond, Heated Seats, Loaded ..... <b>\$16,900</b>
LC28879	<b>2019 CHEVROLET IMPALA LT</b> White, 3.6L, Air Cond, Loaded Off Lease Vehicle..... <b>\$19,900</b>
LC28925	<b>2019 CHEVROLET IMPALA LT</b> White, 3.6L V6, Air Cond, Leather Trimmmed Seats, Loaded Local Off Lease..... <b>\$19,900</b>
LC28817	<b>2018 CHEVROLET IMPALA LT</b> Silver, 3.6L V6, Air Cond, Leather, Loaded Off Lease Vehicle..... <b>\$17,700</b>
LC28958	<b>2018 CHEVROLET MALIBU LS</b> Black Met, 1.5L Turbo, Air Cond, Loaded..... <b>\$17,900</b>
LC28762	<b>2016 CHEVROLET MALIBU LT</b> White, 1.5L Turbo, Air Cond, Nice Off Lease Vehicle ..... <b>14,400</b>
LC28975	<b>2017 CHEVROLET MALIBU LT</b> Dk Gray, 1.5L Turbo, Air Cond, Loaded GM Program Vehicle..... <b>\$16,900</b>
LC7634A1	<b>2017 CHEVROLET MALIBU PREMIER</b> Lt Blue, 1.5L Turbo, Air Cond, Leather, Sunroof Loaded Local Trade with 6XXX Miles.... <b>\$20,900</b>
QC75401A	<b>2017 CHRYSLER 300 C AWD</b> Silver, 3.6L V6, Air Cond, Sunroof, Leather, Fully Loaded Local Trade ..... <b>\$20,900</b>
QC75745A	<b>2016 CHRYSLER 300 C RWD</b> Burgundy, 3.6L V6, Air Cond, Leather, Sunroof Loaded Local Trade..... <b>\$18,900</b>
LC28711	<b>2019 DODGE CHALLENGER R/T</b> Yellow, 5.7L V8 Air Cond, Loaded Off Lease Unit with 11,XXX Miles..... <b>\$26,800</b>
QC57320C	<b>2016 DODGE CHALLENGER SXT</b> Red, 3.6L V6, Air Cond, Leather, Loaded Local Trade..... <b>\$20,800</b>
LC28850	<b>2019 DODGE CHARGER R/T</b> Black Met, 5.7L V8, Air Cond, Loaded Off Lease with 11,XXX Miles... <b>\$28,800</b>
QC75469A	<b>2016 FORD FOCUS SE 4DR</b> Black, 2.0L 4cyl, Air Cond, Leather, Loaded Local Trade ..... <b>\$13,900</b>
QC75521A	<b>2014 FORD MUSTANG CONV</b> Maroon, 3.7L V6, Air Cond, Loaded Local Trade with 47,XXX Miles..... <b>\$15,500</b>
QC75712A	<b>2015 FORD MUSTANG PREMIUM</b> Red, 2.3L Eco, Air Cond Leather, Loaded Local Trade..... <b>\$16,900</b>
QC75668A	<b>2015 SCION FR-S RELEASE SERIES 1.0</b> White, 2.0L 4cyl, Auto, Air Cond, Loaded Local Trade..... <b>\$12,900</b>

## TRUCKS

LT28791	<b>2018 CHEVROLET SILVERADO 2500 CREW LT 4X4</b> White, Duramax, Air Cond, Nice Local Trade..... <b>\$44,000</b>
LT7637A	<b>2015 CHEVROLET SILVERADO 2500 CREW LTZ 4X4</b> White, Duramax, Air Cond, Leather, Loaded Local Trade..... <b>\$39,900</b>
QT75646B	<b>2013 CHEVROLET SILVERADO 3500 CREW LTZ 4X4</b> White, Duramax, Air Cond, Leather, Nice Loaded Trade..... <b>\$32,900</b>
QT57610A	<b>2015 CHEVROLET SILVERADO CREW LT 4X4</b> Red, 5.3L V8, Air Cond, Loaded Local Trade with 46,XXX Miles..... <b>\$30,900</b>
LT28923	<b>2017 CHEVROLET SILVERADO DBL CAB LT 4X4</b> White, 4.3L V6, Air Cond, Loaded Off Lease with 25,XXX Miles..... <b>\$25,000</b>

LT7628A	<b>2018 CHEVROLET SILVERADO DBL LT 4X4</b> Maroon, 5.3L V8, Air Cond, Loaded Local Trade..... <b>\$30,900</b>
LT28906	<b>2019 CHEVROLET SILVERADO LD DBL CAB LT 4X4</b> Red, 5.3L V8, Air Cond, Loaded Off Lease Vehicle..... <b>\$28,900</b>
QT57578A	<b>2016 DODGE RAM CREW SPORT 4X4</b> Yellow, 5.7L V8, Air Cond, Loaded Local Trade..... <b>\$33,400</b>
QT57844A	<b>2014 DODGE RAM REG CAB TRADESMAN 2WD</b> White, 3.6L V6, Air Cond, Local Trade with 29XXX Miles ..... <b>\$18,900</b>
QT57576C	<b>2017 FORD F150 CREW XLT 2WD</b> Bronze, 3.5L Eco Boost, Air Cond, Loaded Local Trade..... <b>\$24,900</b>
QT57469A	<b>2017 FORD F150 CREW XLT 4X4</b> Maroon, 5.0L V8, Air Cond, Loaded Local Trade and only 41XXX Miles..... <b>\$31,900</b>
QT57613A	<b>2015 FORD F250 CREW LARIAT 4X4</b> White, 6.2L V8, Air Cond, Leather, Sunroof, Loaded ..... <b>\$35,400</b>
QT57686A	<b>2016 FORD F250 EXT XLT 4X4</b> White, 6.2L V8, Air Cond, Loaded Local Trade with 36XXX Miles... <b>\$30,900</b>
QT57614A	<b>2018 FORD F350 CREW LARIAT DUALY 4X4</b> White Platinum, 6.7L Diesel, Leather, Loaded Local Trade ..... <b>\$52,700</b>
QT57851A	<b>2017 NISSAN FRONTIER SV EXT 4X4</b> White, 4.0L V6, Air Cond, Loaded Local Trade..... <b>\$17,900</b>

## SUVS

LT28731	<b>2017 BUICK ENCORE PREF FWD</b> Silver, 1.4L Turbo, Loaded GM Off Lease Vehicle ..... <b>\$15,400</b>
LT7586A	<b>2018 CADILLAC ESCALADE ESV PREMIUM</b> Crystal White, 6.2L V8, Air Cond, Leather, Sunroof, Loaded Local Trade..... <b>\$61,900</b>
LT28984	<b>2016 CHEVROLET EQUINOX LT AWD</b> Black, 2.4L 4cyl, Air Cond, Loaded GM Off Lease Vehicle..... <b>\$17,900</b>
LT28982	<b>2017 CHEVROLET EQUINOX LT AWD</b> Black Metallic, 2.4L 4cyl, Air Cond, Loaded Off Lease Vehicle..... <b>\$18,900</b>
LT28957A	<b>2015 CHEVROLET EQUINOX LT FWD</b> Lt Blue, 2.4L 4cyl, Air Cond, Sunroof, Pwr Liftgate, Loaded Local Trade with 60XXX Mile..... <b>\$14,900</b>
LT28979A	<b>2017 CHEVROLET EQUINOX LT FWD</b> Silver, 2.4L 4cyl, Air Cond, Heated Seats, Loaded Local Trade ..... <b>\$16,900</b>
LT28838	<b>2018 CHEVROLET EQUINOX LT FWD</b> Orange, 1.5L Turbo, Air Cond, Loaded GM Program Vehicle..... <b>\$18,700</b>
LT28948A	<b>2017 CHEVROLET TRAVERSE LT FWD</b> White, 3.6L V6, Air Cond, Loaded Local Trade..... <b>\$19,900</b>
LT28812	<b>2019 CHEVROLET TRAVERSE LT FWD</b> White, 3.6L V6, Air Cond, Leather, Loaded Off Lease with only 16,XXX Miles..... <b>\$34,800</b>
LT7634A2	<b>2016 CHEVROLET TRAX LT FWD</b> Red, 1.4L Turbo, Air Cond, Loaded Local Trade and only 18,XXX Miles..... <b>\$14,900</b>
QT75627A	<b>2015 DODGE DURANGO SXT AWD</b> White, 3.6L V6, Air Cond, Leather, Loaded Local Trade..... <b>\$20,900</b>
QT57811B	<b>2013 FORD EDGE LIMITED AWD</b> Maroon, 3.5L V6, Air Cond, Leather, Loaded Local Trade..... <b>\$12,900</b>
QT75653A	<b>2017 FORD ESCAPE SE FWD</b> Whit Gold, 2.0L Eco Boost, Air Cond, Sunroof, Leather, Loaded Local Trade..... <b>\$14,900</b>
QT57225C1	<b>2017 FORD EXPLORER XLT 4X4</b> Gray, 2.0L EcoBoost, Air Cond, Loaded Local Trade..... <b>\$25,400</b>
LT28882	<b>2019 GMC ACADIA SLE AWD</b> Pearl White, 2.5L 4cyl, Air Cond, Heated Seats, Loaded GM Off Lease ... <b>\$25,900</b>
LT28735	<b>2017 GMC TERRAIN SLE FWD</b> Sapphire Blue, 2.4L 4cyl, Air Cond, Loaded Off Lease Vehicle ..... <b>\$16,800</b>
LT28971	<b>2018 GMC TERRAIN SLE FWD</b> White, 1.5L Turbo, Air Cond, Loaded GM Off Lease Vehicle..... <b>\$20,900</b>
LT28594	<b>2017 GMC TERRAIN SLT FWD</b> Maroon, 2.4L 4cyl, Air Cond, Leather, Loaded GM Program Vehicle... <b>\$19,700</b>
LT28736	<b>2019 GMC TERRAIN SLT FWD</b> White, 2.0L Air Cond, Leather, Loaded GM Off Lease Vehicle ..... <b>\$24,800</b>
LT28810	<b>2019 GMC TERRAIN SLT FWD</b> White, 2.0L Turbo, Air Cond, Leather Loaded GM Program Vehicle.... <b>\$23,500</b>
LT28915A	<b>2019 JEEP CHEROKEE LATITUDE</b> Burgundy, 2.4L 4cyl, Air Cond, Loaded Local Trade ..... <b>\$17,900</b>
QT57541B	<b>2015 JEEP GRAND CHEROKEE LIMITED</b> Maroon, 3.0L EcoDiesel, Air Cond, Leather, Loaded Local Trade..... <b>\$22,900</b>
LT28852	<b>2019 JEEP WRANGLER UNLIMITED</b> White, 2.0L Turbo, Air Cond, Loaded Off Lease Vehicle ..... <b>\$35,000</b>

[www.lindsayautogroup.com](http://www.lindsayautogroup.com)



**4X5 HORSE QUALITY MIXED GRASS HAY:** fertilized, net wrapped, grain free. \$40/bale. Rogersville, 417-350-3523.

**IVY CORELLE DISHES:** Mixed setting. \$45. 417-532-2344.

# NEED TO UNLOAD A CLUNKER?

CAN BE TAX  
DEDUCTIBLE



100% OF  
YOUR GIFT  
STAYS  
LOCAL!



MUST BE  
TOWABLE



DOESN'T  
HAVE TO  
RUN



**TO GET STARTED TODAY  
CALL (573) 876-7327  
WOODHAVENTEAM.ORG/OLDCAR**

**QUALITY REPLACEMENT COWS:** 80 BLACK SECOND & THIRD PERIOD COWS, 20 Red 2nd & 3rd period cows, 4-7yrs old, avg weight 1250lb-1300lbs, de-wormed, vaccinated, preg checked, trucking available. Otterville, 660-619-5190.

**04 DAKOTA XST:** 4X4, 5speed, V6, reg cab, 176,000miles. \$4,675obo. 417-399-6383

**JOHN DEERE 2940:** Diesel Tractor, 80HP with G.B. 900 hy reach loader. \$11,000. 573-765-4406.

Monday - Friday  
9:00 am - 5:00 pm  
Saturday  
•By appointment•

**B's MEATS** Beef & Hog Processing  
EST. 2016

195 Holiday St. • Fordland, MO 65652 **417.738.BEEF**

**1 COMPLETE SET OF SERVICE MANUALS:** parts, electrical, engine and fuel for International Cub Cadet series 82 lawn tractors. \$65. 636-239-2695.

**WOOD FURNACE:** Heats over 2,000 sqft home, good condition. \$525. Can deliver. 636-239-4124, Washington, MO.

**JOHN DEERE 435 ROUND BALER:** monitor, kicker, 4X6. \$5,600. 573-765-4406.

**WR CASE & SONS Cookbook & Historical Companion.** \$7.50. 417-532-2045, Lebanon.

**CATAHOULA LEOPARD PUP:** female, 8mos. \$50. 417-543-4816.

**PATRIOT SMALL SKID STEER:** Loader, one owner. \$4,600. 573-765-4406.

**FLARE WAGON WITH HOIST:** \$200. 573-764-2270.

**REMINGTON 11:** 12 gauge. \$200. 573-569-4669, Versailles.

**RITCHEY MO. HISTORY:** A small village in the Missouri Ozarks, (Newton County 1925-1950). \$20. Lebanon, 417-532-2045 (Leave Phone Number).

**WANTED, TIMBER TO LOG ON SHARES:** Honest, reliable, references. 417-533-4607, 417-664-1195.

**IT'S A GAS SWAP MEET:** Gas & Oil Collectibles, Advertising, Coin-Op - No Auto Parts. Saturday, February 8th, 8am to Noon. Cowan Civic Center, Lebanon, MO. \$5 Admission. For more information, call Nancy (573) 864-1336. Website: [www.itsa-gasswapmeet.com](http://www.itsa-gasswapmeet.com)

**REMINGTON MODEL-870 WINGMASTER:** 16 or 12 gauge pumps. \$275 each. 573-756-1065.

**OLD LINN CREEK, HA HA TONKA & CAMDEN CO BOOK "Before the Dam Water",** by T. Victor Jeffries. \$3.50 plus \$2 if mailed. 417-532-2045, Lebanon (Leave Phone Number).

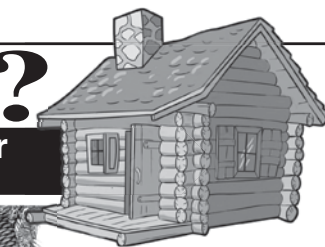
Is Your Log Home **UGLY?**  
Starting To Look

**Professional Staining & Repair**  
(Log Homes & Wood Siding)

Call

**Pine Ridge Rustic**

Log Home Building Supplies



**573-729-7226**

[www.pineridgerustic.com](http://www.pineridgerustic.com)

**1993 FORD RANGER:** 5speed 4.0. \$2,500. 2010 Prius: 1 owner. \$5,000. Waynesville, 573-528-7317.

**JOHN DEERE 925 DISKBINE:** With rollers \$6750. 573-765-4406.

**POSTER BED.** \$99 Round table. \$40. Duncan Phyfe Table. \$90. 417-741-1232 or 417-241-5193.

**DOG PEN:** 8'x8', 4' tall and dog house. \$125. 636-239-4124.

**4X5 ROUND BALES:** excellent quality hay. \$65/bale. Lebanon, 417-322-0161

**JOHN DEERE MODEL A:** for sale, 1947. \$2,200. Ford Jubilee. \$1,200 Windyville, 417-770-3834.

**FOUR TIRES:** Size 245-60 R18 Michelin. No patches. \$90 firm. 417-532-2344.

**REG SHIB-INU PUPPIES** for sale: Whelped late October. \$200 each. Cherryville, MO 65446. 573-743-6616. Free Adults.

**WANTED:** Someone with a skid-steer outside of Cherryville to clean a large stall and around a corral, partial Oak Tree that needs cut up and hauled away, \$50. 573-743-3420.

**1995 FORD L7000:** cab on chassis, hood, radiator, after cooler, everything but engine & bed. \$1,500. 417-733-5939, Tunas.

**2013 31ft COACHMAN CATALINA:** Deluxe Edition model, ACAT31RLS, Sleeps 7-9 people. Excellent condition. \$14,500. 573-216-2079, pictures sent on request.

**FORD A66 DIESEL WHEEL LOADER:** \$10,500. 573-765-4406.

**2007 FORD TAURUS:** 171,000 miles-all highway, loaded. \$2,250. 417-531-1496.

**SHAVER WOOD FURNACE** for sale: Heats water for house. Used 4 seasons. Ready to hook-up. \$3,500. 417-967-2292, Bucyrus, MO.

**\$19,900 USED DOUBLE WIDE:** nice 3 bedroom, 2 bath delivered & set-up.....Hurry, This house will NOT last long! Call now 573-657-2176 amegamobilehomes.com

**2015 YELLOW SILVER TOBIANO CURLY MARE:** 43" high, registered ISHA, willing and gentle, saddled but not ridden. \$1,100. Niangua, 417-880-0025.

**TWO TRUCK TIRES:** 750x16 1/4 inch tread. \$25 each. Gerald, 573-764-2270.

**1953 FORD JUBILEE:** new tires, runs good, excellent condition. \$3,000. 417-664-3425.

# Rustic Ozark Log Cabins, LLC

BEAUTIFUL CUSTOM HANDCRAFTED NATURAL LOG HOMES



## Native Missouri Yellow Pine Logs

- Our Log Homes Exceed the Energy Efficiency of an R-24
- Low to NO Maintenance Log Homes!

## Turn Key Packages

Starting at \$110 Per. Sq. Ft.  
Get only the Log Skeleton  
\$25-30 Per. Sq. Ft.

- Complete Material Packages
- Builders and Do It Yourself?
- In-House Designing
- We help one and all!

## FREE ESTIMATES!

- We Guarantee our Workmanship

## TREES

- The Renewable Natural Resource! GO GREEN-GO LOG!

**O: 417-533-0644 C: 573-247-7161**  
**Lebanon, Mo • www.RusticOzarkLogCabins.com**

**FREE TO GOOD HOME:** Wire Mouth & Blue Heeler Cross puppies, 6 weeks old. 417-256-3235, West Plains.

**DARDEN PROFESSIONAL TIMBER HARVESTING, BUYING STANDING TIMBER:** Great prices, improve wildlife habitat and improve forest health. State Certified & Fully Insured! 573-247-4808 or 573-739-1122. Salem

**HALF GERMAN SHORT-HAIR POINTERS:** 4 females/1 male, no paper, no shots, tails not cut. Rehoming fee. 417-588-6129, leave message.

**JOHN DEERE 567 ROUND BALER:** monitor, kicker, wide pick-up, cover net wrap. \$9,650. 573-765-4406.

**WEATHERTECH FLOOR MATS:** Complete set, for Jeep Grand Cherokee. \$100. 573-756-3969.

**STARRETT OUTSIDE MICROMETER SET:** #224, 2"-6", NIB. \$500obo. 573-374-1307.

**MAYTAG EXTRA LARGE CAPACITY:** Heavy duty, 2 speed washer, white. \$100. Washington, 636-239-2695.

**IHC 1086 DIESEL TRACTOR:** Cab & Cold Air. \$8,750. 573-765-4406.

**CHURCH FOR SALE:** Sturgeon, MO. All new outside, remodeled inside, holds 80-90 people, nice kitchen, 2 nice restrooms, on 6 corner lots. Also could be used as Daycare business etc. Call only, 573-881-2006.

**LAUGHING DOVES:** Multi-colored, must have LARGE cage to fly. 573-612-4351.

**2011 CHEVROLET IMPALA:** 4-door, new tires, never wrecked, 107,000miles. \$7,500. 417-531-1116.



**MODULAR STOCK SALE** - It is time to move our inventory. **TRUE MODS** - Save Thousands. Call Marla, better than 20 years experience. 573-657-7040, [chateauhomes.net](http://chateauhomes.net).

**HALF AUSTRALIAN/HALF BORDER COLLIE PUPPIES:** 2 females, parents here, shots/wormed, out of working cat-tledogs. \$150/each. No Text, 417-839-1558, Marshfield

**POOL TABLES:** Installations, moves, recovery, repairs, accessories, etc. 573-646-1700.



**5 MOUNTED TIRES:** size 12-20, \$200. 417-753-2747, 417-766-1991, Rogersville.

**0% for 4 Years\***



\*with approved credit  
**Outdoor Wood Furnace**  
as low as **\$168** per month  
**HEATMOR MIDWEST**  
Licking, MO 65542  
573-674-2962

*Is handgun ammo getting difficult to find in your area? Come get yours today at:*

9435 HWY N. Suite A (417) 926-0255  
Mtn. Grove, MO [craigsoutdoorsports.com](http://craigsoutdoorsports.com)  
Mon-Fri 9am-5pm • Sat 9am-Noon

**DON'T FLUSH AWAY YOUR MONEY  
HIRE THE PROS!**



- **SEPTIC TANKS** Installed & Serviced
- State Licensed On-Site Waste Water Treatment
- All Kinds of BACKHOE Work & LIGHT HAULING
- Driveways & Road Ditches Cleaned.

**573-202-6491 or 573-578-3813**

**MURRAY RIDING MOWER:** Good tires, deck, blades, 5-speed, needs motor. \$150-gun trade. 573-364-7465.

**WOODWORKING EQUIPMENT:** w/5HP planer and smaller planer, several different items. 573-480-7524/573-480-7523.

**BUSINESS OPPORTUNITY FOR SALE:** Complete, metal "panel forming" equipment, and inventory. Customform Willow Springs, Sharon Bacon, 417-252-1941.

**DOUBLE SET OF WHEEL CHOCKS:** Color is Safety Yellow. \$30. 636-239-2695, Washington

**AC 840 DIESEL ARTICULATING 4-WHEEL DRIVE LOADER:** \$7,250. 573-765-4406.

**T215X70 R14:** 1/4" tread. \$25/each. 573-764-2270.

# CLASSIFIED AD DEADLINE CHANGE

Due to a change in our press schedule, we have adjusted our deadlines accordingly.

*As of January 23, 2020, deadlines are as follows:*

**Display Advertising: Friday Noon**  
**Classified Line Listings: Friday 4:00pm**

**T** WEEKLY  
**TRADER**  
MAGAZINE

*Thank you for your patronage!*

417-532-9131 • P.O. Box 192  
Lebanon, MO 65536

[www.myweeklytrader.com](http://www.myweeklytrader.com)

**ARE YOU KIDDING ME???**-Used double-wide, \$19,900!!!! delivery & set-up, 3 bedroom, 2 bath, Call 573-499-9993 [comlumbiadiscounthomes.com](http://comlumbiadiscounthomes.com)

**SMALL WOOD STOVE.** \$60. 636-239-4124.

**HAROLD BELL WRIGHT BOOKS:** God and The Groceryman and The Re-Creation of Brian Kent. \$10 each. Lebanon, 417-532-2045 (Leave Phone Number).

**30 GAL FUEL TANK:** Fiberglass. \$50. 417-753-2747, 417-766-1991, Rogersville.

**SPECIALIZING IN HEAVY DUTY GATES**



**Cow Country Gate Sales**

Call Randy: 573-569-4754  
or Home: 573-539-2528  
Located at: Zimmerman Welding  
16889 Hwy 52, Barnett, MO

**AKC FRENCHIE PUPPIES:** Chocolate Fawn, black-mask, blues, other colors, shots, guarantee. \$1,500 and up. 573-238-3873/573-208-6269.

**BROME HAY FOR SALE:** \$5/square. 573-539-2060.

**FOR SALE: 146 ACRE M/L FARM** cfd in Licking, MO: Two metal barns, Three bedroom mobile. \$441,900. Also 83 Acre M/L recreational or mini farm. \$324,900. Call Lena Berg, Red Caboose Real Estate, Connie Culp, Broker, 573-578-2887. [redcaboose Realty.com](http://redcaboose Realty.com)

**REGISTERED HEREFORD & ANGUS BULLS:** Home raised, Some Show-Me Select Qualified. 573-701-7828. Belgrade

**HARDY WOODBURNING WATER FURNACE.** \$3,500. 630-687-0705.

**2000 FORD EXPEDITION:** 4x4, Eddie Bauer edition, very dependable, just serviced. \$2,700obo. Springfield, 417-848-8754.

Put more \$\$ in your pocket. Bring your calves to market sooner, eliminate flies, lice and ticks. How?? Prairie Phoenix Cattle Care System. Call LOCAL Dealer at 417-286-3540 or 774-696-2344.

**CUSTOM SAW MILLING:** Lebanon. 417-533-4607, 417-664-1195.

**BOAT TRAILER:** for 14' boat or make good flat bed trailer, good tires. \$125, trade. 417-683-7843, Tecumseh.

**CASE DC TRACTORS:** One, wide front, PS, 7' rear sickle. \$2,200. One, narrow front, 12' rear sickle. \$1,800. One, narrow front w/3pt lift. \$1,600. 417-848-8754, Springfield.

**Buildings • Hunter's Cabins • Lawn Furniture**



**JAMCO Portable Buildings**

800-688-2064 • 307 Enterprise Dr. • Seymour, MO • [www.jamcobuilders.com](http://www.jamcobuilders.com)

**Rent To Own Plan**

**HORSE BUCKBOARD:** 8'x32" pneumatic tires. \$575. Niangua, 417-880-0025.

**LIONEL TRAIN SET:** Steam engine, tender, caboose and other car, track and transformer. \$195. 573-364-7465, Rolla.

**6FT FOLD OUT LOADING RAMPS:** Like new, used once. \$75 firm. Gerald 573-764-4435.

**1989 CHEVROLET PICK-UP:** Rough. \$350. 417-531-1496.

**WONDERLUX DUEL FUEL WOOD CIRCULATOR:** W/Blower. \$275. 417-531-1116.

**DETROLA MUSIC MACHINE:** Plays CD'S, Records, Cassettes, AM-FM Radio, excellent condition, 20x18x12, oak finish, antique look. \$65. 573-364-7465, Rolla.

**Starnes Auto LLC**  
22115 Rt. 66 • Lebanon, MO 65536  
417.588.3159 Office • 417.718.2707 Cell  
[www.starnesauto.com](http://www.starnesauto.com)

**1999 CHEVY SUBURBAN**  
WHITE, 2WD, 179,XXX MILES ..... **\$2,950**

**2001 CHEVY TAHOE**  
GREEN, 4WD, 303,XXX MILES ..... **\$2,800**

**2001 CHEVY TRACKER**  
RED, 5-SPEED, 2WD, 130,XXX MI ..... **\$1,750**

**2001 GMC SIERRA 1500**  
EXT CAB, SLT, 4X4, 225,XXX MILES ..... **\$3,950**

**2003 CHEVY S10 EXT**  
PEWTER, 68,XXX MILES ..... **\$4,200**

**2005 CHEVY SUBURBAN**  
BLUE, 4X4, 202,XXX MILES ..... **\$4,200**

**2005 CHEVY TAHOE LT**  
PEWTER, 4WD, 207,XXX MILES ..... **\$4,450**

**2005 GMC YUKON DENALI**  
CHARCOAL, AWD, 199,XXX MILES ..... **\$4,200**

**2007 CHEVY TAHOE**  
PEWTER, 239,XXX MILES ..... **\$7,250**

**2008 PONTIAC G6**  
SILVER, 4 CYL, 120,XXX MILES ..... **\$4,250**

**2009 GMC ACADIA**  
SILVER, 106,XXX MILES ..... **\$7,250**

**2013 CHEVY EQUINOX LT**  
BLUE, 2WD, 55 XXX MILES ..... **\$11,500**

**2013 HONDA CRV**  
BLACK, AWD, 113 XXX MILES ..... **\$10,500**

**2017 CHEVY IMPALA LT**  
BLACK, V6, 47,XXX MILES ..... **\$14,500**

**WE DO ALIGNMENTS!**

**WANTED PINBALL MACHINES.** 573-424-7200.

**29 ACRES,** Old house, well, on highway. 15 miles west of Doniphan, MO. \$40,000. 573-714-5779.



**15FT BATWING BRUSH-HOG:** Heavy duty. \$4,900. 417-322-0161

**BOBCAT 853 DIESEL SKID STEER LOADER :** 57hp, with Bobcat 909 Backhoe Attachment. \$10,950 573-765-4406.



**FREE 4-NIGHT VACATION!**  
Donate Car • Boat • RV • Motorcycle

**1-800-CarAngel**  
[www.boatangel.org](http://www.boatangel.org)

**60 ACRES M/L:** 2 Ponds, 2 automatic waterers, fenced, 40x52 newer barn, well, septic, trailer that needs work, will consider Owner Financing with \$80,000 down, Cost is \$175,000. 573-743-3420



**Larry Heisel Rentals**  
Have Rock? How about 3,500 lbs. of Hammer

Call Larry!  
**573-779-1500**  
[www.larryheiselequipment.com](http://www.larryheiselequipment.com)  
Rental Available in 636 or 573 area code

**AUCTION REMINDER:** Liquidation Auction Monday January 27th @ 10AM. Rona Downs-Maroon Restaurant Equipment. Please see our Auction Directory for more information.



**NEW BIG TEX 22GN FLATBED TRAILER**

**JIM'S Motors**  
I-44 at Exit 208 • Cuba, MO  
[www.jimsmotors.com](http://www.jimsmotors.com)  
**(573)885-2595**  
**(800)897-9840**

GREAT SERVICE!  
1957-2018 GREAT PRICES!

**COZY SECLUDED ONE BEDROOM HOME:** in gated area, includes all utilities except telephone, trash and satellite, 7 miles south of St. James. \$450/month 573-699-4351

**WOOD STOVE:** Uses 3' long wood, good condition. \$75. 636-239-4124.

**PINE LOG SIDING..** [www.pineridgerustic.com](http://www.pineridgerustic.com) 573-729-7226.

**5055E JOHN DEERE TRACTOR:** Open station, MFWD, H240 loader, like new, 109hours, private owner. \$26,500. Consider offers. 417-599-8089.

**BUTLER TRAILER:** All steel, tilt bed, tandem axle, pintle hitch. Asking \$1,100 OBO. 314-223-8539, Eureka.

**30 GAL PROPANE TANK:** Has new valve. \$75. 417-683-7843, Tecumseh.

**OLDER ELECTRIC CORN MEAL/ FLOUR GRINDER.** \$100. 417-646-8807.

**BARN WOOD SIDING: 8" & 10" wide.** 573-729-7226. [www.pineridgerustic.com](http://www.pineridgerustic.com)

**L4400 KUBOTA:** 4wd tractor with loader and 3rd function valve, Low hours. \$21,500. 417-270-1505.

**RUNNING 235 CHEVROLET MOTOR:** Hear run before you buy. \$200. 417-683-7843.

**555E NEW HOLLAND BACKHOE: 4WD.** 3,700 hours, diesel engine, good tires, new battery, 24" bucket, \$18,000 OBO. 314-223-8539, Eureka

**SMALL SQUARE HAY BALES:** Timothy, Alfalfa & Orchard Grass mixed. \$6. Alfalfa grass mixed. \$5.50. Long Lane, 417-345-5634

**EARN \$60,000/YR:** Part-Time in the Live-stock of Farm Equipment Appraisal Business. Agricultural background required. Home Study Course available. 800-488-7570 or [www.amagapraisers.com](http://www.amagapraisers.com)

**GREAT PYRENEES PUPS FOR SALE:** 417-664-8781.

**TRAINER WANTED:** Bred sows and registered Nubian does. \$200. Registered Arabian horses. 2 bedroom furnished house. \$500/month. Raymondville, 573-548-0219. [ashley-creekhorseco.com](mailto:ashley-creekhorseco.com)

**FIREARMS:** Professional Repairs and Restorations. Baron's Gunsmithing. 573-363-5801, Camdenton.

**WANTED:** UTV (used, good condition, fair price). 270-970-8243, Lebanon.

**WHITE METAL BABY BED:** W/mattress, converts to toddler bed, very good. \$100. 417-531-1116.

**4 BASKET HYDRAULIC FOLD TEDDER:** \$2,500. 573-765-4406.

**\$1000 SIGN ON BONUS**

**ASPLUNDH**

**TREE EXPERT, LLC**

Is seeking **EXPERIENCED Line Clearance Tree Trimmers, Bucket Operator and Forepersons**

For work in the Lebanon and surrounding areas. **Excellent Benefits:**

*401K, Health, Dental, Vision Paid Vacations and Holidays.*

Must be a safe and productive worker pass a pre-employment drug test, and have valid driver's license.

**\$21-\$24 per hour**

Call 636-583-1175 or apply online • [Asplundh.ourcareerpages.com](http://Asplundh.ourcareerpages.com)

**AUCTION REMINDER:** Lakefront Auction. On-Line bidding ONLY. Auction ends Friday January 31 at 1:07Pm. Mickey Duckett Auctioneer. Please see our Auction Directory for more information.

**MONEY MAKER 30 RYOBI GAS CHAINSAWS:** Reconditioned 18", 16", 14", like new. \$2,450. 417-399-6383.

**2004 DODGE RAM 3500 DUALY:** 4wd, auto, double cab, 5.9 Cummins, 58K miles. \$26,500. 417-270-1505.

**05 CANYON SLE: 4X4, extended cab, 4dr, 155,000miles, 30,000 on new motor. \$6,475obo. 417-399-6383**

## See Service

### Spray Foam Insulation

Closed cell or open cell form available  
Choose the thickness of your insulation

<b>Closed Cell</b> <ul style="list-style-type: none"> <li>• Higher R. value</li> <li>• Vapor barrier</li> <li>• Structural benefit</li> <li>• Fire Resistant</li> </ul>	<b>Open Cell</b> <ul style="list-style-type: none"> <li>• Lower Cost</li> <li>• Sound Deadening</li> <li>• Fire resistant</li> </ul>
---	--

Both types of foam fill voids and stay where they are put to provide better insulation than fiberglass or cellulose

FINANCING AVAILABLE WE ACCEPT  
VISA MASTERCARD

**Call Joseph See**  
**(417) 733-6936**  
Located near Buffalo, MO

**PINNACLE RANCH/12mo Red Angus and Red Gelviah Bulls/Red Angus & Red Gelviah Heifers for sale. 417-679-4269, Gainesville.**

**CATTLE DOG:** Registered Australian male, 4years old, needs full time job, elderly couple reducing herd, don't need. \$350. Marshfield, 417-839-1558, no text.

**5 PIECE SET W/LIDS OF BLUE FLOWER CORNINGWARE:** no chips, good condition. \$65. 417-532-2344.

**ROD AND REELS:** fishing season is coming. \$5 and up. Conway, 417-589-8200.

**HAY FOR SALE:** 5X5.5 Round bales of Grass Hay \$45. 5x6 Straw bales, \$65. 573-539-2060

**JOHN DEERE 2630:** Diesel tractor, 70HP, w/145 JD loader. \$8,650. (573)765-4406.

**QUEEN SIZE BOX SPRINGS AND MATTRESS:** \$150. 573-327-9068

**BUTCHER BEEF:** Grain fed, ready to go. Some long horns w/nice head/horns for good wall mount. 573-701-6637, 573-579-0361.

**CATTLE DOGS, HUNTING DOG, GUARD DOGS:** And great companions, UKC Registered, Catahoula Leopard puppies, born 10-24-19. \$300. 660-620-2113, no Sunday calls.

**HORSE HAY:** Square bales, weed free, Big Blue stem, 80% pure. \$5 bale, mixed grass hay, \$4.50/bale. 573-368-1794, Rolla.

**BORDER COLLIE/AUSTRALIAN SHEPHERDS;** Ready 12/29/19. Also purebred Border Collies: Ready 01/04/20. Females \$150, Males \$100. 417-349-1386, Hartville.

**PAIR OF LOVE BIRDS:** 1 year old, with cage and accessories. 417-935-2635, Seymour.

**SMALL SQUARE BROME HAY:** 70LB, horse quality, delivery available. 417-532-6686, 417-531-6686.

**LOT OF 72: "The Antiques Journal" Magazines, years- 1974-75, 1978-80, Mar-Dec 1977, Jan-Feb 1981. \$30 for all. Grovespring, 417-533-9484.**

## 2011 Ford F150 Platinum SuperCrew Cab

4X4, 3.5L V6 Ecoboost,  
Black, New Tires,  
Drives Great, 99,XXX Miles,  
Salvage Title, Very Minor  
Damage Repaired

\$15,900



## 417-718-5347 • Conway

**KIDS LITTLE TYKES RED CAR BED:** w/ mattress. \$150. Desloge, 573-327-9068.

**4x5 NET-WRAPPED FESCUE & RED CLOVER.** First & second cutting, fertilized. \$45/bale. 417-818-6210.

**2006 CURLY TOBIANO MARE:** 45" high, registered ICHO/NAC, Broke to drive, has had one foal. \$1,750. Niangua, 417-880-0025.

**REMINGTON BAIKAL:** 410-gauge, double barrel, silver receiver. \$500. 573-756-1065.

**RENTAL NEEDED ASAP:** Moving to area, and need rental house w/pasture for our horses. Leave message, 641-226-2431 or 573-578-6476.

**PLATFORM SCALES.** \$100. Sickie Grinder. \$25. 417-646-8807.

**HOLLYWOOD 4-BIKE HITCH MOUNT RACK:** Excellent condition, Includes (2) Allen Stabilizer tension bars and keyed alike locking hitch pin and cable. \$175. Conway, 417-718-5347.

**TAKUCHI 135 EXCAVATOR:** \$15,000. 573-765-4406.

**GLIDER ROCKING CHAIR:** Mint condition, green cushion. \$40 firm. Gerald, 573-764-4435.

**4X5 ROUND BALES BROME HAY:** in barn, no weeds, horse hay. \$45/bale. Sullivan, 573-259-3216.

**10 FOLDING TABLES:** for yard sale maybe. \$100. 573-327-9068.

**ROME 8FT OFFSET DISK:** \$3,750. 573-765-4406.



**Now Stocking**  
**Large Selection**  
 of  
**Plumbing**  
 PEX, PVC, & CPVC  
 and  
**Electrical**  
 Supplies!



**STOCKING**  
**Porter Paints**  
**PPG**  
**Commercial Paints**  
**Sikkens**  
**Stains**

Seymour, Missouri 417-935-4201

Sale Ends January 31, 2020



### Pole Barns & Post Framed Buildings!

Call for free quote, brochure & color chart.  
 Other sizes also available.

<b>23'x32'x10'</b> <b>\$4,099</b> Material Only <b>\$5,319</b> Labor Included	<b>23'x40'x10'</b> <b>\$4,799</b> Material Only <b>\$6,329</b> Labor Included	<b>30'x40'x10'</b> <b>\$5,699</b> Material Only <b>\$7,699</b> Labor Included	<b>40'x60'x12'</b> <b>\$10,099</b> Material Only <b>\$14,359</b> Labor Included
---	---	---	---



### NOBODY, BUT NOBODY BEATS OUR PRICES!!!

10 ft. Slider • Engineered Trusses 8' O.C. • 2x6 Treated Bottom Wrap • Screws • 2x10 Top Wrap • 2x4 Purlins • Full 29 Gauge Steel • Plus 3 ft. Entry Door with Lock

OPTIONS: Sidewall Heights on all Buildings 10', 12', 14' & 16'. Overhead Garage Door. Skylights. Insulation. Wainscoting. Insulated Vinyl Windows. Cupolas. Labor Rates Slightly Higher over 50 Miles from Seymour. Call for YOUR FREE QUOTE TODAY!!!!

**PAINTED WHITE, GREEN OR TAN METAL .....\$69.99**

**10' - \$22.10 12' - \$26.52 16' - \$35.36**

**MIX & MATCH METAL .....\$39.99**

**8' - \$10.13 10' - \$12.67 12' - \$15.21**

**GALVALUME METAL .....\$52.50**

**10' - \$16.60 12' - \$19.92 16' - \$26.56**

**GALVANIZED CORRUGATED METAL.....\$56.75**

**8' - \$9.84 10' - \$12.30 12' - \$14.75 16' - \$19.67**

**IN STOCK**



**LP SMARTSIDE T-5 LAP B GRADE \$43.59SQ**

### Car Siding!

1x6 White Pine Siding **43¢** in ft

1x8 White Pine Siding **54¢** in ft

\* 4 Profiles to choose from!  
 Broken Bundles Add 10¢ Per Ft.

### 4x8 Sheeting

Less than full units Add \$1 per sheet

3/8" Beaded Paneling **\$15.99**

5/8" T111 Siding **\$19.99**

Paneling **\$9.99**

1/2" Plywood **\$19.99**

3/4" Plywood **\$23.99**

3/16 Pegboard **\$12.99**

### Sales and Servicing



### NEW PACKAGE HOMES



Shown with Available Options

Your Choice of either:

Stock 5/8" T111 Wood Siding w/1x4 Pine Window & Door Trim - or -

7/16" OSB & House Wrap ready for other finish options

2x6—16" on center-Exterior Stud Walls  
 Residential Roof Trusses-2' on center  
 4/12 pitch with 1' over hang

40 year Painted Metal roofing in 20 Different Colors

Profile Ridge Vent - Ventilated Ridge Cap

Vinyl Center Vent Soffit

Color Matched Metal Fascia & Gable Trim

2 - 3' 6 Panel Entry Doors

4 - 3'x4' Vinyl Insulated Windows

**ALL FIGURED FOR SUITABLE CUSTOMER  
 SUPPLIED SLAB OR SUB-FLOOR**

**Price for Basic Materials Package & Labor**

20x24(480 sq. ft.)	20x32(640 sq. ft.)	20x40(800 sq. ft.)	28x40(1120 sq. ft.)	28x48(1344 sq. ft.)
<b>\$9,050</b>	<b>\$10,615</b>	<b>\$12,119</b>	<b>\$15,242</b>	<b>\$17,075</b>

### REAL WOOD SIDING

**2x6 Log Siding - 1.09¢ in ft**

**1x8 Beveled Cedar from- 64¢ in ft**

**5/8 T1-11 Siding from \$19.99**

### DECK PACKAGES

**Materials Only**

8x6 .....\$199.99	10x12 .....\$419.99
8x8 .....\$239.99	10x16 .....\$549.99
10x10 .....\$349.99	12x12 .....\$499.99
12x16 .....\$649.99	



Now Stocking Quaker Vinyl Windows

2030 \$ 99.99

3030 \$119.99

3040 \$129.99

3052 \$145.99

3040Twin \$279.99

3052Twin \$314.99



**LUCKY DISCOUNT LUMBER**

**417-935-4201**

**455 State Hwy C • Seymour MO 65746**

**www.luckydiscountlumber.com**



\*Some restrictions apply see store for details



**SMALL SQUARE HAY BROME:** Clean horse quality. \$6/bale. Timothy Brome Mix. \$5/bale. Big squares second cutting Brome. \$60/bale. Versailles, 573-378-7326.

**VILLA HOMES IN ROLLA:** Has NEW and USED Mobile Homes. Call David for info: 573-578-8072.



**Custom Welding & Repair!**

Custom Welding & Repair on Farm Machinery & All types of trailers including semi | Alum Welding | Lights & Brakes Repair

**JR's Fabrication**

Levi K. Zook • 417-741-2312 • 4875 Hwy BB Hartville

**SECOND & THIRD CUTTING Fescue & Clover:** 5x5.5 Round bales, stored inside. \$65. Wet wrapped Rye: 5x4.5 Bales. \$50. Third & Fourth Cutting Alfalfa & Orchard Grass: 2x3 square. \$50. Small Square \$8. NO Rain. Versailles, 573-378-4974.

**MONEY MAKER 21 NEW BLACK MAX GENERATORS:** In boxes. 4,500 start watt. 3,600 run watt. \$5,250. 417-399-6383.

**COMMERCIAL MEAT SLICER:** Toledo scale, model-5401. \$500obo. 573-374-1307.

**IHC 806 DIESEL TRACTOR:** Turbo, W.F. 3pt. \$8,950. 573-765-4406.



**Wright Spray Foam Insulators, LLC**  
Commercial & Residential  
Call for FREE Estimates!

Ervin Gingerich 417-926-2052  
B. Eli Yoder 417-746-4932

**MASSEY FERGUSON 50.** Good condition. \$2,295. Rt 66 Tractor Repair, Old Hwy 66, St James, MO. 573-263-2732.

**WANTED OUTSIDE WOOD FURNACE:** Used. Also, 3pt 6' Brush Hog. 636-239-4124.

**MEDIUM CHEST DEEP FREEZE:** works good. \$50. 417-531-1116.



## ★ American Made Metal Roofing ★

40 Year Warranty Metal.....\$1.99 (\$62.18 Per Sq)



\*29 Gauge 10 Year .....\$1.79 (\$55.93 Per Sq)

**\*\*While Supplies Last\*\***

29 Gauge #1 Galvalume .... \$1.69 ....\$1.39 (\$43.44 Per Sq)

29 Gauge 40 Year \*Saddle Tan\* ....\$1.69 (\$52.81 Per Sq)

★ 17 Colors To Choose From

★ 20 Years In Business

★ We Manufacture Our Own Metal and Trusses



**3 Locations To Serve You!**

6952 E. 7th St.  
Joplin, MO.  
417-317-7961

1100 Pace Rd.  
Pocahontas, AR.  
870-609-1900

35 Killdeer Rd.  
Seymour, Mo.  
417-952-7143

*\*possibly not American made*

### Building In A Box

Stud Wall & Pole Barn Kits

Non-Warranty Metal	10Year Warranty	40Year Warranty
24x30x8.....\$3,350	.....\$3,700	.....\$3,850
30x40x10....\$4,950	.....\$5,350	.....\$5,600
40x60x12....\$9,300	.....\$10,000	.....\$10,200

Precut Packages Also Available

**ACOUSTIC ALVAREZ GUITAR:** W/electric pick-up, w/hard case. \$200 or trade. Gerald. 573-764-4435.

**DINING TABLE & 4-CHAIRS:** like new. \$200. 417-531-1116.

**RARE 1937 CIVILIAN CONSERVATION CORPS (CCC) 7TH CORPS AREA OFFICIAL MANUAL.** \$20. 417-532-2045, Lebanon (Leave Phone Number).

**DIAMOND BASEBALL CATCHERS GLOVE:** Like new. \$95obo. 573-374-1307.

**WANTED:** 1966-1977 Ford Bronco. 816-838-6254.

**BLACK SIDE-BY-SIDE FRIDGE:** GE. \$175obo. Halfway, 417-327-5606. No Sunday Calls Please.

**PYRENEES/ANATOLIAN PUPPIES:** currently in training, parents are excellent sheep/guard dogs. \$250. 417-322-0161.

**NICE PAIR OF 1" BELTA DRIVING LINES:** for team of horses. \$50 for set. 417-718-5347, Conway.

**HAY FOR SALE:** Small square, 4x5 round & 4x6 round bales. Licking, 573-578-7210.

**IVY CORELLE DISHES:** Mixed setting. \$45. 417-532-2344.

# BUY NOW

**before the spring rush!**

29ga 40 Year Warranty Painted .....\$64.00 sq

29ga 20 Year Warranty Galvalume .....\$49.00 sq

26ga Metal also available..... Call for Pricing



### Express Building Kit

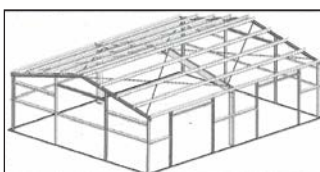
**40' x 50' x 14' Pre-Engineered Red Iron Building**

3:12 pitch • 26ga Painted Metal on Roof and Walls

2-12'X12' Framed Openings on side OR 2-14'X14'

Framed Openings on ends • 1- 3'X7' Walk-In Doors

Materials Only **Now \$14,995** Available in approx. 1 week



**VISIT US @ JENKINSBUILDINGS.COM**



Showroom & Sales Office  
Bolivar, Missouri 65613  
**(417) 326-4228**  
Next to Smith's Restaurant  
Hwy. 13 & U

Corporate Office  
Polk, Missouri 65727  
**(417) 852-4228**  
2 Miles South of Pittsburg  
on Hwy. 64



JenkinsBuildings.com  
Prices Subject to Change



# We Buy White Oak Logs!

**Independent Stave Company  
welcomes all white oak suppliers!**

- ✓ Top prices for your logs
- ✓ Experienced log buyers
- ✓ Professional service

[www.independentstavecompany.com](http://www.independentstavecompany.com)

Chad Cook | Salem Wood Products

**417.718.2950**

5 miles north of Salem, MO on Hwy 19



**4X5 HORSE QUALITY MIXED GRASS HAY:** fertilized, net wrapped, grain free. \$40/bale. Rogersville, 417-350-3523.

**1993 FORD RANGER:** 5speed 4.0. \$2,500. 2010 Prius: 1 owner. \$5,000. Waynesville, 573-528-7317.

**JOHN DEERE 925 DISKBINE:** With rollers \$6750. 573-765-4406.

**QUALITY REPLACEMENT COWS:** 80 BLACK SECOND & THIRD PERIOD COWS, 20 Red 2nd & 3rd period cows, 4-7yrs old, avg weight 1250lb-1300lbs, de-wormed, vaccinated, preg checked, trucking available. Otterville, 660-619-5190.

**1 COMPLETE SET OF SERVICE MANUALS:** parts, electrical, engine and fuel for International Cub Cadet series 82 lawn tractors. \$65. 636-239-2695.

**WOOD FURNACE:** Heats over 2,000 sqft home, good condition. \$525. Can deliver. 636-239-4124, Washington, MO.

**JOHN DEERE 435 ROUND BALER:** monitor, kicker, 4X6. \$5,600. 573-765-4406.

**WR CASE & SONS Cookbook & Historical Companion. \$7.50. 417-532-2045, Lebanon.**

**CATAHOULA LEOPARD PUP:** female, 8mos. \$50. 417-543-4816.

**PATRIOT SMALL SKID STEER:** Loader, one owner. \$4,600. 573-765-4406.

**FLARE WAGON WITH HOIST:** \$200. 573-764-2270.

**REMINGTON 11:** 12 gauge. \$200. 573-569-4669, Versailles.

## 2006 BOBCAT S-250

75hp turbo diesel,  
aux hyds,  
joystick controls,  
6600 hrs.



**\$18,500**

**573-465-0276**

**POSTER BED.** \$99 Round table. \$40. Duncan Phyfe Table. \$90. 417-741-1232 or 417-241-5193.

**DOG PEN:** 8'x8', 4' tall and dog house. \$125. 636-239-4124.

**04 DAKOTA XST:** 4X4, 5speed, V6, reg cab, 176,000miles. \$4,675obo. 417-399-6383

**JOHN DEERE 2940:** Diesel Tractor, 80HP with G.B. 900 hy reach loader. \$11,000. 573-765-4406.

**4X5 ROUND BALES:** excellent quality hay. \$65/bale. Lebanon, 417-322-0161

## METRO MOTORS INC. R.V. SALES

**NEW GREY WOLF, CHEROKEE & ROCKWOOD!  
GREAT SELECTION OF NEW & PREOWNED RVs**

•2019 18RJB Wolfpup Toy Hauler	\$13,000	•2019 282TESP Pop-up Toy Hauler	\$14,000
.....		Loaded!.....	Sale Price
•2019 2650 Rockwood 5th Wheel	\$30,500	•2018 PreOwned 2650 Rockwood 5th Wheel	\$27,500
3 Slides .....	Sale Price	3 Slides .....	Sale Price
•2019 16FQ Wolfpup Trailer	\$12,000	•2020 #8364 274DBH Cherokee Trailer	\$21,500
.....		Loaded! Lg. Slide-out, Sleeps 8 .....	Sale Price
•2019 2104S Rockwood Trailer	\$20,500	•2020 #8433 19BH Geo-Pro Trailer	\$19,900
Loaded! Heated Tanks .....	Sale Price	Loaded! Solar, Heated Tanks .....	Sale Price
•2019 214 HW Rockwood A Frame	\$13,500	•2020 #8454 19FB Geo-Pro Trailer	\$21,900
Loaded! Shower & Stool .....		Loaded! Solar, Heated Tanks, Slide-out.....	Sale Price

**"Where Your Satisfaction Really Counts"**

2727 S. Campbell - Springfield, MO - Visit our website at [www.metro-motors.biz](http://www.metro-motors.biz)

**417-882-6800**



**RICHEY MO. HISTORY:** A small village in the Missouri Ozarks, (Newton County 1925-1950). \$20. Lebanon, 417-532-2045 (Leave Phone Number).

**WANTED:** Someone with a skid-steer outside of Cherryville to clean a large stall and around a corral, partial Oak Tree that needs cut up and hauled away, \$50. 573-743-3420.

# COLE'S TRACTOR & EQP, INC.

1 mile east of Farmington on Highway 32 • 573-756-4353

## SPECIAL PROMOTION

**FREE PRESSURE WASHER for the MONTH of JANUARY**

AND STILL THE MOST FAVORED WARRANTY ON THE MARKET — 6 YEARS!!!

*Baby It's Cold Outside*

KEEP WARM ON THE FARM THIS WINTER

**\$34,799**

**LS XU6168**

*with Heat and A/C  
and Front Loader  
with Skid Steer Quick  
Attach Bucket*

- 68HP
- 4 WD (FRONT WHEEL MECHANICAL ASSIST)
- GO FROM 2WD TO 4WD WITH A SIMPLE MOVE OF A LEVER
- SYNCHRO SHUTTLE
- INDEPENDENT PTO
- REMOTE HYDRAULICS
- DELUXE ROOMY CAB
- FENDER MOUNTED CONTROLS FOR EASE OF USE
- EXTENDABLE LOWER LINKS
- STANDARD TILT & POWER STEERING
- ERGONOMICALLY DESIGNED 3-POINT HITCH WITH HYDRAULIC AUTO-LIFT CONTROL
- EASY OPEN ONE-PIECE HOOD
- DELUXE ADJUSTABLE SEAT WITH ARM RESTS AND RETRACTABLE SEAT BELT
- MORE STANDARD FEATURES AND OPTIONS AVAILABLE @LSTRACTORUSA.COM

**LS TRACTOR**  
*The Major Brand Maker*

**PARTS and  
LABOR**





**FORD A66 DIESEL WHEEL LOADER:** \$10,500. 573-765-4406.

**2007 FORD TAURUS:** 171,000 miles-all highway, loaded. \$2,250. 417-531-1496.

**FOUR TIRES:** Size 245-60 R18 Michelin. No patches. \$90 firm. 417-532-2344.

**TWO TRUCK TIRES:** 750x16 1/4 inch tread. \$25 each. Gerald, 573-764-2270.

**OLD LINN CREEK, HA HA TONKA & CAMDEN CO BOOK** "Before the Dam Water", by T. Victor Jeffries. \$3.50 plus \$2 if mailed. 417-532-2045, Lebanon (Leave Phone Number).

# Serving Central Missouri!

## in 32 counties!



- Boone
- Laclede
- Callaway
- Maries
- Camden
- Miller
- Cedar
- Montgomery
- Christian
- Oregon
- Cole
- Osage
- Crawford
- Ozark
- Dallas
- Phelps
- Dent
- Polk
- Douglas
- Franklin
- Pulaski
- Gasconade
- St. Clair
- Greene
- Hickory
- St. Francois
- Howell
- Texas
- Iron
- Washington
- Oregon
- Webster
- Wright

# WEEKLY TRADER

## MAGAZINE

**417-532-2800**  
**100 E. Commercial St.,**  
**Lebanon, MO 65536**

**WWW.MYWEEKLYTRADER.COM**

f @myweeklytrader

**WANTED, TIMBER TO LOG ON SHARES:** Honest, reliable, references. 417-533-4607, 417-664-1195.

**REG SHIB-INU PUPPIES** for sale: Whelped late October. \$200 each. Cherryville, MO 65446. 573-743-6616. Free Adults.

**JOHN DEERE MODEL A:** for sale, 1947. \$2,200. Ford Jubilee. \$1,200 Windyville, 417-770-3834.

**REMINGTON MODEL-870 WINGMASTER:** 16 or 12 gauge pumps. \$275 each. 573-756-1065.

**JOHN DEERE 567 ROUND BALER:** monitor, kicker, wide pick-up, cover net wrap. \$9,650. 573-765-4406.

**WEATHERTECH FLOOR MATS:** Complete set, for Jeep Grand Cherokee. \$100. 573-756-3969.

# WEEKLY TRADER MAGAZINE



## AUCTION DIRECTORY

### Thursday, January 23

11:00 AM Mid Missouri Stockyards.....28

### Saturday, January 25

9:00 AM Wheeler Auctions & Real Estate .....19

10:00 AM Cheyney Auction Company.....21

12:00 PM Buffalo Livestock Market.....27

6:00 PM Wheeler Livestock Auction .....25

### Sunday, January 26

1:00 PM Nance Auction Service .....24

### Monday, January 27

10:00 AM Maron Restaurant Equipment .....22

### Wednesday, January 29

6:00 PM Easterly Auction Co.....26

### Friday, January 31

1:07 PM Mickey Duckett Pro. Auctioneer .....23

### Friday, February 7

12:00 PM Salem Livestock Auction.....27

### Saturday, February 8

TBD Glen Fahrni Auction.....28

### Saturday, February 29

10:00 AM Wheeler Auctions & Real Estate .....27

### Weekly Online Auctions

Sundays Crawford Online Auctions.....20

**#1 Rural Shopper**  
in Central Missouri



**Call 1-800-665-8875 to get your auction listed in the Weekly Trader.**

**AUCTIONEERS** Did you know the WEEKLY TRADER covers more counties in rural Missouri than any other publication?

**Firm deadline is 12:00 PM Friday, prior to next week's Thursday publication date.**

**IT'S A GAS SWAP MEET:** Gas & Oil Collectibles, Advertising, Coin-Op - No Auto Parts. Saturday, February 8th, 8am to Noon. Cowan Civic Center, Lebanon, MO. \$5 Admission. For more information, call Nancy (573) 864-1336. Website: [www.itsagasswapmeet.com](http://www.itsagasswapmeet.com)

**1995 FORD L7000:** cab on chassis, hood, radiator, after cooler, everything but engine & bed. \$1,500. 417-733-5939, Tunas.

**LAUGHING DOVES:** Multi-colored, must have LARGE cage to fly. 573-612-4351.

**FREE TO GOOD HOME:** Wire Mouth & Blue Heeler Cross puppies, 6 weeks old. 417-256-3235, West Plains.

**DARDEN PROFESSIONAL TIMBER HARVESTING, BUYING STANDING TIMBER:** Great prices, improve wildlife habitat and improve forest health. State Certified & Fully Insured! 573-247-4808 or 573-739-1122. Salem

**STARRETT OUTSIDE MICROMETER SET:** #224, 2"-6", NIB. \$500obo. 573-374-1307.

**HALF GERMAN SHORT-HAIR POINTERS:** 4 females/1 male, no paper, no shots, tails not cut. Rehoming fee. 417-588-6129, leave message.

**2013 31ft COACHMAN CATALINA:** Deluxe Edition model, ACAT31RLS, Sleeps 7-9 people. Excellent condition. \$14,500. 573-216-2079, pictures sent on request.

**SHAYER WOOD FURNACE** for sale: Heats water for house. Used 4 seasons. Ready to hook-up. \$3,500. 417-967-2292, Bucyrus, MO.



# ANNUAL JANUARY CONSIGNMENT AUCTION

*Saturday, Jan. 25 at 9 am*

## WHEELER AUCTIONS LOT IN PARIS, MO

TRACTORS; COMBINES; PLATFORMS AND CORN HEADS;  
PLANTERS AND DRILLS; TILLAGE TOOLS; HAY EQUIPMENT;  
ROTARY CUTTERS; CONSTRUCTION PIECES; LAWN, GARDEN AND ATV'S;  
GRAIN, FEED AND MATERIAL HANDLING; SPRAYERS AND APPLICATORS;  
TRUCKS; TRAILERS; LOTS OF LIVESTOCK EQUIPMENT

**VISIT [WHEELERAUCTIONS.COM](http://WHEELERAUCTIONS.COM)  
FOR FULL LISTING AND PHOTOS!**

Live Online  
Bidding

Powered By:  
**proxibid**

## ACCEPTING CONSIGNMENTS

**MONDAY, JAN. 6 - THURSDAY, JAN. 23 (UNTIL NOON)**

**LOADING HOURS - MONDAY - FRIDAY, 8 AM TO 5 PM**

**SATURDAY, JAN. 18 AND SUNDAY, JAN. 19, 9 AM TO 3 PM**

**4 OR MORE AUCTION RINGS WILL RUN DAY OF SALE.**

**Wheeler**   
**AUCTIONS & REAL ESTATE**

23101 HWY. 24, PARIS, MO 65275 | 660-327-5890  
[WWW.WHEELERAUCTIONS.COM](http://WWW.WHEELERAUCTIONS.COM)

**2500+ PIECES  
OF MACHINERY**



**Connecting  
Buyers &  
Sellers Of  
Old Coins**

**SELL YOUR ESTATE**

**NOW ACCEPTING  
CONSIGNMENTS!**

*Online*

**WWW.OZARKBID.COM**



**SHIPPING ON  
AVAILABLE ON  
MOST ITEMS**

**SELL YOUR ITEMS  
NATIONWIDE**

**SAVE TIME, SAVE  
MONEY, SHOP AT  
ONLINE AUCTION**

*- Online*  
**CRAWFORD**  
**Auction Service**

*Register and bid online*  
**@ www.OzarkBid.com**

**Ozarkbid**

Contact Chase Crawford, Crawford Auction Service for more info @ 417-399-1904



# REAL ESTATE AUCTION

# Auction

## Saturday, January 25, 2020 • 10:00 AM

**OWNERS: Ronnie & Lee Huett • Location: 512 S Mansfield Rd Ava, MO 65608**

**Directions: From the Ava square, watch for Cheyney Auction signs.**



### REAL ESTATE SELLS @ 12:00 NOON SHARP!

2 bedroom, 1 bath home with detached garage on 112 x 195 ft lot.

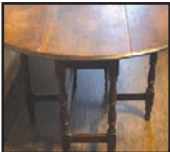
### PERSONAL PROPERTY VEHICLES:

2013 Chrysler 200, 108,xxx miles

### HOUSEHOLD



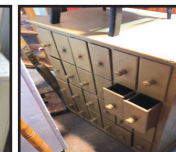
- Queen bed
- Matching wooden dresser set
- Wall ladder shelf
- Wall art
- Recliner
- Love seat
- Various wooden tables
- Antique drop leaf table
- TV trays
- Wooden storage bench
- Folding table/desk



- Estate refrigerator
- Crosley cookstove
- Hutch and matching table w/4 chairs
- Infrared heater
- Crock (2)
- Washboards
- Dyson vacuum
- Kenmore washer
- Whirlpool dryer
- Danby chest freezer
- Large office desk w/ file

- cabinet and bookshelf
- Swivel office chair
- Various decorative baskets
- Kitchen items
- Corner hutch
- Antique pie safe
- Wooden stand-up mirror
- Wooden swivel chair
- 4 kitchen chairs
- Wooden TV armoire
- Small antique wooden

- cabinet
- Sofa table
- 2 kitchen Stools
- Theater seats
- Oak rocking chair
- Misc vintage chairs
- Wooden side tables
- Vintage mail locker
- Antique bread box
- Coffee tables
- Kitchen glassware set



### TOOLS, ETC.

- Porter Cable battery powered nail gun
- Sawzall • Shop vac • Chopsaw
- Cordless trimmer
- Push mower
- Aluminum folding ladder
- Dynaglo Pro kerosene heater
- Delta table saw
- 6 ft step ladder
- Old storage locker
- Moving dolly



**FOR MORE PICTURES SEE [WWW.CHEYNEAUCTIONS.COM](http://WWW.CHEYNEAUCTIONS.COM)**

**Auctioneer Note:** This auction will not take long, so get here early. The real estate will sell to highest bidder at noon.

**Terms of Sale:** Cash or check with valid ID. Now accepting credit & debit cards w/ 3% convenience fee.



## Cheyney Auction Company, LLC

Real Estate • Livestock • Farm & Ranch • Equipment • Household • Antiques

**Travis Cheyney, Auctioneer**

**417-543-8751 • [cheyneyauctions.com](http://cheyneyauctions.com)**

ANNOUNCEMENTS Made Day Of Sale By Auctioneer Take Precedence over any Printed Matter. Not Responsible For Accidents.



# OUTSTANDING LARGE RESTAURANT & LOUNGE ICE CREAM SHOP LIQUIDATION AUCTION

**MONDAY, JANUARY 27 – 10:00 AM**

CAP'S CABIN RESTAURANT & CONTENTS FORMERLY OF SCOOPIES ICE CREAM

**104 W THIRD ST • FAIR PLAY, MO**

LOCATION: 1033 GULF ST, LAMAR, MO

## SELLING ➡ RESTAURANT EQUIPMENT\*

NORLAKE 6'X7' WALKIN COOLER & NORLAKE 6'X7' WALKIN FREEZER, BOTH 220 VOLT, SGL PHASE & SELF CONTAINED, LIKE NEW! MANITOWOC 300 LB ICE MACHINE-3 REFRIGERATED SANDWICH PREP TABLES-ELECTRO FREEZE SOFT SERVE ICE CREAM MACHINE-MALT MIXER-STAJAC 8 TUB ICE CREAM DIPPING CABINET FREEZER-BEER COOLERS & BAR ITEMS-SHOWCASE MERCHANDISER COOLER-REACHIN COOLERS, FREEZERS & OTHER REFRIGERATION-MOFFAT TURBO FAN SINGLE FULL SIZE ELECTRIC CONVECTION OVEN W/STAND, 220-240 VOLT, SGL PH, EXCELLENT, COST OVER \$4,200 NEW! AVANTCO PROOFER-SOUTHBEND 6 BURNER RANGE W/OVEN-2 COOK RITE GAS 36" CHEESE MELTER BROLERS-CPG & SUPERA 36" NAT GAS GRILLS-3 FRYERS & PORTABLE OIL FILTRATION SYSTEM-PANINI GRILL-4 CAMBRO SALAD BARS, 2 NEW IN BOX! HOBART COMMCL DISHWASHER-SINKS-GREASE INTERCEPTOR-WORKTABLES & EQUIPMENT STANDS-CAN RACK & LOTS OF WIRE SHELVING UNITS-SEATING INCL TABLES, CHAIRS, BARSTOOLS & PATIO DINING-OTHER RESTAURANT EQUIPMENT & SMALLWARES GALORE! MUCH MORE TOO NUMEROUS TO LIST!

## \*HUGE AMOUNT OF DÉCOR & COLLECTIBLES\*

**PREVIEW & ABSENTEE BIDDING ON DÉCOR  
SUNDAY, JANUARY 26 – NOON TO 2 PM**

FANTASTIC LARGE SELECTION QUALITY DÉCOR & COLLECTIBLE ITEMS IN LODGE, HUNTING, FISHING, NAUTICAL & MORE! DUE TO THE LARGE VOLUME, WE WILL BE HOSTING AN ABSENTEE BIDDING OPPORTUNITY ONE DAY PRIOR TO THE AUCTION FOR THOSE UNABLE TO ATTEND THE LIVE AUCTION TO LEAVE BIDS ON DÉCOR ITEMS!

**NOTE:** VISIT OUR WEBSITE FOR COMPLETE LISTING AND PHOTOS. SUPER NICE, CLEAN RESTAURANT WITH ALMOST EVERY ITEM 4 YEARS OLD OR NEWER! CHARLES AND LACY ARE ALSO ADDING THE CONTENTS OF THEIR FORMER ICE CREAM SHOP TO THIS AUCTION JUST IN TIME FOR THE START OF ICE CREAM SEASON. FANTASTIC WALKIN COOLER AND FREEZER, SANDWICH PREP TABLES, ELECTRIC CONVECTION OVEN AND OH SO MUCH MORE! ABSOLUTELY SOMETHING FOR EVERYONE! DON'T MISS THIS OPORTUNITY TO PURCHASE SUPER, ABSOLUTELY LIKE NEW EQUIPMENT! HOPE TO SEE YOU AUCTION DAY! BRING A FRIEND AS WE WILL BE RUNNING 2 AUCTION RINGS BEGINNING AT 11 AM. MARK YOUR CALENDAR & MAKE PLANS TO ATTEND THIS EXCELLENT AUCTION!

## MARON RESTAURANT EQUIPMENT, LLC & AUCTIONS

**RONA DOWNS & RICK NEWMAN, AUCTIONEERS**

**P O BOX 110, COLLINS, MO • 417-327-5619**

**AUCTIONZIP.COM/AUCTIONEER ID #29686**





Mickey Duckett  
CAI, MPPA, AARE, CES

## Mickey Duckett Professional Auctioneer

P.O. Box 1575, Ozark, MO 65721

(417) 353-2768

[www.mickeyduckettproauction.com](http://www.mickeyduckettproauction.com)



# TRANQUIL LAKEFRONT AUCTION

26688 Fm. Rd. 2208, Shell Knob

Open House: Sat. Jan. 25th, 12-3

Online Bidding Ends Fri., Jan. 31st @ 1:07

Whether you are looking for a peaceful "forever" home or a great vacation home this one fits the bill! This lovely, approximately 2,184 sq. ft., 4 bedroom / 2 bath home, is situated on three Table Rock lakefront lots. This home offers a large living room with lots of windows to let the sun in and rustic wood beams that accent the ceiling, spacious dining room, a large kitchen with lots of cabinet space, and all appliances. There are two bedrooms on the main level and two non-conforming bedrooms in the lower level. The partially finished basement has a family room with woodburner to make it extra cozy. There are new upper and lower decks that make it perfect for those great barbecues or just to enjoy the view of the lake! This home also has newer heating, newer roof and newer septic all within the last three years. With all the mature shade trees, the great fishing that Table Rock has to offer and all the playful wildlife that you can watch in a day, this home is a perfect example of peaceful relaxation! **So Get Your Bids In Now!!**

**Owners:** Terry & Tresa Clarkson

**Real Estate Terms:** 5% Buyer's Premium. 10% down to be placed into escrow the first business day after Auction, balance due in thirty (30) days. Auction Company to receive deposit from Internet Bidders no later than Mon., Feb. 3rd. Taxes prorated to day of closing. **Sale subject to meeting seller's reserve. NOT SUBJECT TO FINANCING!** Auctioneer or Seller does not guarantee the accuracy of information obtained from outside sources. Announcements the day of auction take precedence over any and all printed and/or internet materials.

**Auctioneer Note:** Beautiful home with lots of amenities! Check out our Online Catalog!! For more photos and register to bid, go to our website at [www.mickeyduckettproauction.com](http://www.mickeyduckettproauction.com)!! Call Mickey at 417-353-2768 for more information or private showing.





# ESTATE AUCTION

**Sunday, January 26, 2020 ~ 1:00 PM**

**LOCATION: 1206 Hicks, Golden City, MO (Watch For Signs)**

**Auction For Bill & The Late Barbara Lowry**



## **Antique, Modern Furniture & Appliances**

Ant Oak Low Boy Dresser, Ant Oak Wash Stand, Ant Oak & Wicker Hall Table, Ant Mirrored Back Wood Shelf, Ant Pie/Jelly Cabinet, Ant 3 Leg Drop Leaf Table, 2 Ant Night Stands, Ant Chest Of Drawers, Ant Dresser W/Mirror, Ant Vanity Desk, Ant 4 Post Queen Bed, Ant Marble Top Plant Stand, Ant Ornate Chair, Ornate Armoire Chest Of Drawers, Several Prim Cabinets & Benches, Prim Tables, Prim Chest Of Drawers, Prim Doors, Lg Lot Of Pictures, Paintings & Mirrors Some Ant & Ornate, 2 Retro Sitting Chairs, Hide A Bed Couch, 2 Lane Recliners, 3 Cushion Couch, Iron Wine Rack W/Glass Holders, Glass Top Round Kitchen Table, King Size Bed, Cast Iron Heat Stove, Metal Tables, Card Tables & Chairs, Carpet Shampooer & Vacuum Sweepers, 2 Aquariums, 2 Flat Screen TV's 1 W/Stand, 110 AC Unit, Refrigerator, Washer & Electric Dryer, Other Items Not Listed

## **Antiques, Collectibles & Households**

Old Crock, Neat 2x3 Ft Wood Ship, 3 Ant Oil Tops W/Jars, Old Lg Metal Oil Advertising Can, Miller Neon Sign, Some Sm Cars, Old License Plates, Old Clear Glass, Old Milk Glass, Old Cookbooks, Fish

Décor, Hot Dog Cooker, Sm Kitchen Appliances, Pots, Pans & Dishes (Some Old), Lots Of Other Antiques, Households & Kitchen Wares Already Boxed & Unable To See Added Sale Day

## **Trailer, Mower, Tiller, Tools & Outdoor**

### **Related Items**

2001 Flatbed 16 Ft Trailer, Cub Cadet XT1 Hydro 42" Cut Riding Mower, Yard Dump Utility Cart, Front Tine Tiller, 2 Stihl Weed Eaters, Stihl & Ryobi Blowers, Ant 3 Pt 2 Shovel Cultivator, Lg Waterloo Toolbox, Sm Hand Tools, Socket Sets, Air Tools, Sm Electrical Tools, Chop Saw, Grinder, Craftsman Table Saw, Drill Press, Shop Vac, Air Compressor, Roll Around Battery Charger, Lg & Sm Vises, Wheelbarrow, Long Handle Tools, Wood & Alum Ladders, Floor Jack, Tire Chains, Trailer Ramps, Metal Shop Shelves, Several Shop Work Tables, Some Sm Iron To Make Décor Items, Patio Set, Wood Yard Chairs, Yard Swing, Bird Bath & Other Concrete & Metal Yard Décor, 2 Windmills, Fishing Poles, Fish Cooker, Coolers, Other Items Not Listed



**Auctioneers Note:** It Is An Honor To Be Conducting This Auction For Mr. Lowry As We Have Known Bill & His Family For Many Years. Bill Use To Own & Operate Lowry Automotive For Several Years & Has Been A Well Respected Member Of The Community. As Bill Is 90 Years Old & Has Decided To Sell His Home & Relocate To Be Closer To His Family We Will Offer A Fine Line Of Antique, Modern Furniture & Appliances, Also Good Antiques, Collectibles & Households. Excellent Trailer, Mower, Tools & Outdoor Related Items. This Will Be an Excellent Auction With Something For Everyone So Please Plan Now to Attend. **Sale Order: Furniture & Appliances Will Sell First Followed By Antiques, Collectibles & Households. At Approx 3:30 PM Will Offer Trailer, Mower & Large Items. Remainder Of Tools & Outdoors Will Finish Auction. See Ya There!!!**

Terms: Cash or check with proper ID. Now accepting most major credit cards. Nothing removed until settled for. Statements made the day of sale takes precedence over printed material. Everything sold as is where is. Not responsible for accidents. Restroom available. Concessions Provided By D&D Concessions. Check our website for upcoming auctions and for additional pictures!!!



# NANCE AUCTION SERVICE

**No Matter How BIG or small, We Do Them All!!!**

**Col. Bill Nance 417-214-0093**





# Wheeler Livestock Auction, Inc.

## SPECIAL STOCK COW & BREEDING BULL SALE



# SAT., JAN. 25, 2020 • 6:00 P.M.

**Expecting 700 head of bred heifers, young cow/calf pairs, and bred cows.**

### Havas Farm Dispersal

- 4 Reg. Red Ang. Bulls, 1 bull-5 yrs., Calving Ease Mushrush breeding, 2 bulls-2 yrs., 1 bull-3 yrs., Bieher & Beckton breeding. 4 Reg. Red Ang cows, 2 yrs., 2 w/ calves & 2 bred 3rd. 13 Red Ang. hfrs., 2 yrs., bred 3rd to Fusion Red Ang. 19 Blk Ang cows, 1,200 lbs., 5-6 yrs., bred 2nd & 3rd to Char Bulls.

### L & H Farm-

- 22 Fancy Blk Cows, 3-6 yrs., 1,300 lbs., bred 2nd & 3rd to Ang. bulls. Cows are  $\frac{1}{4}$  Gelv &  $\frac{3}{4}$  Angus. All home raised, had all shots, gentle.

### Nox Charolais-

- Complete Dispersal of Spring Calvers-43 Purebred Char Cows,
- 3-6 yrs., 1,400 lbs., bred 3rd to Char or Red Ang bulls. Start calving Mar. 1st for 60 days. Cows all home raised, fancy & gentle.

### Denny Farms-

- 29 Blk & BWF cows, 3-5 yrs., 1,250 lbs., 2 calves on ground, rest bred 3rd to Blk or Char bulls.

### Braden Farms-

- 65 Blk & BWF Ang/Brng X cows, 4-6 yrs., 1,250 lbs., bred 3rd to Ang or Char bulls. 40 Red & Yell Char X cows, 4-6 yrs., 1,250 lbs., bred 3rd. Above 105 cows gentle, had all shots & bred to good bulls.

### Roy Houk-

- 8 Blk cows, 5-6 yrs., 1,250 lbs., bred 3rd to Ang bulls.

### Oplotnik Farms-

- 36 Blk Ang cows, 5 BWF cows, 6-8 yrs., 1,300 lbs., bred 3rd to good Ang bulls. Calve Mar. 1st for 75 days. All cows are home raised & were AI sired. Good calf raisers, kept heifers & selling older cows.

### Double S Farm-

- 15 Char & Red Ang X cows, 5-7 yrs., 1,350 lbs., bred 3rd to Red Ang bull start Mar. 1st.

### Keller Farm-

- 41 Red & Blk Corriente cows, 3-6 yrs., bred 3rd. 10 Red & Blk Corriente cows, 7-BM., bred 3rd. All 51 cows bred to Spur Ranch Ang bulls, start Mar. 1st for 60 days, good calf raisers.

### S-Bar-M Farm-

- 5 Ang hfrs., 2 yrs., 1,000 lbs., w/ 5 Blk clvs., 15 Ang hfrs., 2 yrs., 1,000 lbs., bred 3rd to Ang bulls. 25 Blk cows, 3-5 yrs., 1,250 lbs., bred 2nd & 3rd to Ang bulls., 15 Char X cows, 3-5 yrs., 1,250 lbs., bred 2nd & 3rd to Ang bulls.

### Steinmark Farm-

- 15 Red Saler cows, 3-5 yrs., 1,400 lbs., bred 3rd to Saler bull. Cows are big & gentle, calve Mar. 1st.

### Pending Consignment-Complete Dispersal-

- 45 Ang cows, 5-8 yrs., 1,200 lbs., w/ 35 calves weighing up to 500 lbs., cows bred back to Ang bulls., rest of cows bred 3rd to Ang bulls. 2 Ang Bulls, 3-4 yrs., 1,700 lbs.

**MANY MORE CONSIGNMENTS PENDING AND EXPECTED BY SALE DAY**

**Special Feeder Calf Sale - February 6th & 20th. February Special Stock Cow Sale - February 29th  
Seedstock Plus Red Rewards Bull & Female Sale - March 14th @ 12:00**



# Wheeler Livestock Auction, Inc.

**Osceola, MO • 685 SE 13 Hwy., PO Box 560 • BARN 417-646-8102**

**Byron Wheeler, 417-777-0897 • Austin Shelby, 417-309-1350 • Darwin Hearting, 417-296-1029**

**Charlie Proctor 417-326-9467 • Burleigh Wheeler, 417-840-6561 • Skyler Fisher, 417-298-9051**

**Jeff Shelenhamer, 417-326-9929 • Kevin Wade 660-492-3279 • Les Tennis, 417-466-8786**

**Office Manager: Weston Shelby, 417-298-1316**

**Bid online on CattleUSA • [www.wheelerlivestock.com](http://www.wheelerlivestock.com)**

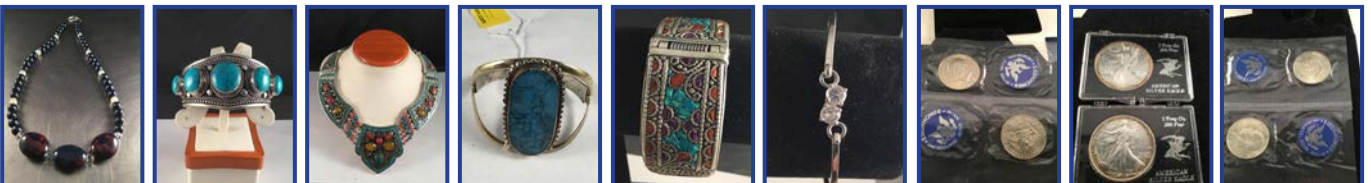
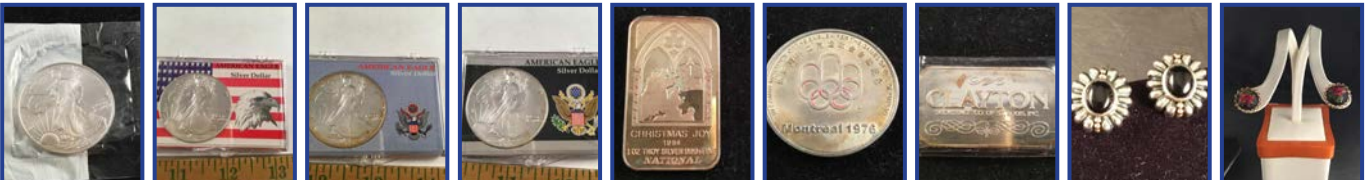
**Like us on Facebook-Wheeler Livestock Auction**

**PLACE  
YOUR  
BID  
TODAY!**

# JEWELRY & COIN AUCTION

**Wednesday, January 29 @ 6:00PM**  
**2350 N Clifton • Springfield, MO 65803**

**Directions: From the intersection of Kansas expressway & Kearney go West on Kearney, Turn left on Clifton and auction will be on left.**



# 307 LOTS



**FOR MORE INFORMATION GO TO [WWW.EASTERLYAUCTIONCO.COM](http://WWW.EASTERLYAUCTIONCO.COM) OR CALL EASTERLY'S AT 417-833-9494**

**EASTERLY**  
AUCTION CO.

Go to [www.EasterlyAuction.com](http://www.EasterlyAuction.com)



[auctionzip.com](http://auctionzip.com)  
ID#14770

**Mike Easterly Auctioneer**  
**417-833-9494**

Not Responsible for accidents or theft.

For more information call: Easterly Auction Company, Springfield, MO.

Auction Terms: Bank Letter Of Credit Required.

Visa, Mastercard, Cash, Cashier's check or checks with proper I.D.

Announcements day of sale take precedence over printed material. Auction Notes: Although information

is obtained from sources deemed reliable, auctioneer makes no warranty or guarantee expressed or implied.

Buyers should themselves take the opportunity to make their own inspection prior to sale.



## **BUFFALO LIVESTOCK MARKET LLC**

276 Hwy 32 West  
Buffalo, Missouri

**January 18<sup>th</sup>, 2020  
Receipts: 974 Head**

**Feeders \$3-\$10 Higher.  
Cows \$3-\$5 Higher.**

### **Representative Steers**

300-400 @ 175.00 to 200.00  
400-500 @ 171.00 to 182.00  
500-600 @ 163.00 to 175.00  
600-700 @ 148.00 to 155.50  
700-800 @ 140.00 to 147.00  
800-900 @ 134.00 to 138.00

### **Representative Heifers**

300-400 @ 152.00 to 165.00  
400-500 @ 140.00 to 156.50  
500-600 @ 136.00 to 142.50  
600-700 @ 125.00 to 136.50  
700-800 @ 125.00 to 130.00

### **Feeder Bulls**

400-500 @ 155.00 to 167.00  
500-600 @ 135.00 to 156.50  
600-700 @ 128.00 to 140.50  
700-800 @ 120.00 to 131.00

### **Slaughter Cows**

35.00 to 58.50

### **Slaughter Bulls**

74.00 to 86.00

### **Bred Cows**

Few \$850.00 to 1050.00

**SHEEP & GOAT SALE**  
TUESDAY, JAN. 28th • 6pm

### **MON-WED MARKET REPORT**

Listen to KJEL 103.7FM • Lebanon or KYOO 99FM • Bolivar

**VIEW OUR SALES AT CATTLEUSA.COM**

**CALL FOR TRUCKING OR ON-FARM VISIT**

**Lyle Caselman • Owner-Manager**  
417-345-7876 • mobile 417-533-2944  
**Leon Caselman • Owner**  
417-345-4514 • mobile • 417-588-6185  
**Howard Miller • Owner 417-345-8122**

## **Salem Livestock Auction**

Hwy. 32 Salem, MO • 573-729-8880  
Over 40 Years in the Livestock Business

## **Upcoming Special Sales!**

### **Friday, February 7<sup>th</sup>**

Pre Vac Sale at 12:00 pm  
*Cattle must be weaned 45 days with at  
least 1 round of shots*

### **Tuesday, February 11<sup>th</sup>**

Goat, Hog & Sheep Sale at 6:00 pm

### **Saturday, February 15<sup>th</sup>**

Stock Cow Sale at 1:00 pm

**Luke Peterson • 417-259-0036**

**Shawn Chadwell • 417-830-0209**

**Bryce Lauderdale • 417-255-5124**

### **Field Representatives**

Wright & Surrounding Counties  
We Appreciate Your Business!

### **Cattle Sale Every Monday at 12:00**

Feeder Calves to sell at 12:00 pm  
Butcher Cows & Stock Cows following

### **All Consignments Welcome Up Until Sale**

*We Appreciate Your Business!*

**Allen Thompson** **Renee Lauderdale**  
417-932-4097 417-926-2682

**Chuck Thompson** **Brandon Barton**  
417-257-5610 417-259-1597

Terms of Sale: Cash or Approved Check!

**MAYTAG EXTRA LARGE CAPACITY:**  
Heavy duty, 2 speed washer, white. \$100.  
Washington, 636-239-2695.

**CHURCH FOR SALE: Sturgeon, MO. All new outside, remodeled inside, holds 80-90 people, nice kitchen, 2 nice restrooms, on 6 corner lots. Also could be used as Daycare business etc. Call only, 573-881-2006.**

**\$19,900 USED DOUBLE WIDE:** nice 3 bedroom, 2 bath delivered & set-up.....Hurry, This house will **NOT** last long! Call now 573-657-2176 amegamobilehomes.com

## **Kilmer Farm Equipment CONSIGNMENT AUCTION**

**SATURDAY, FEB. 29 • 10 A.M.**

14769 Cattle Lane

Versailles, MO

(1 Mile North of Versailles, MO  
on Hwy 5 then ½ Mile East)

**AD DEADLINE:**

**FEB. 5, 2020**

**SELLER:**

**KILMER FARM  
EQUIPMENT**

**CONTACT DANIEL KILMER  
FOR MORE INFORMATION  
(573) 378-6615**

**Wheeler**  
**AUCTIONS & REAL ESTATE**

23101 HWY. 24, PARIS, MO 65275 | 660-327-5890  
WWW.WHEELERAUCTIONS.COM

**2015 YELLOW SILVER TOBIANO  
CURLY MARE:** 43" high, registered ISHA,  
willing and gentle, saddled but not ridden.  
\$1,100. Niangua, 417-880-0025.

**1953 FORD JUBILEE:** new tires, runs good,  
excellent condition. \$3,000. 417-664-3425.

**IHC 1086 DIESEL TRACTOR:** Cab & Cold  
Air. \$8,750. 573-765-4406.

**2011 CHEVROLET IMPALA:** 4-door, new  
tires, never wrecked, 107,000 miles. \$7,500.  
417-531-1116.

**MODULAR STOCK SALE -** It is time to  
move our inventory. **TRUE MODS -** Save  
Thousands. Call Marla, better than 20 years  
experience. 573-657-7040, chateauhomes.  
net.

**MURRAY RIDING MOWER:** Good tires,  
deck, blades, 5-speed, needs motor. \$150-gun  
trade. 573-364-7465.

**DOUBLE SET OF WHEEL CHOCKS:**  
Color is Safety Yellow. \$30. 636-239-2695,  
Washington

**WOOD STOVE:** Uses 3' long wood, good  
condition. \$75. 636-239-4124.



**MID  
MISSOURI  
STOCKYARDS**

**REGULAR SALE EVERY  
THURSDAY 11AM**

For Farm Visits, Market Updates, or Trucking

Call **Zach Cox 417-777-1320**  
**Dan Romine 573-578-4939**

**Competitive Buyers!  
Competitive Commission!  
Competitive Market!**

Barn: 417-532-9292



I-44 • Exit 123 "just outside of Lebanon"  
17505 Route 66, Phillipsburg, MO 65722

For weekly market updates, visit us at  
[www.midmostockyards.com](http://www.midmostockyards.com)

**HALF AUSTRALIAN/HALF BORDER  
COLLIE PUPPIES:** 2 females, parents  
here, shots/wormed, out of working cat-  
tledogs. \$150/each. No Text, 417-839-1558,  
Marshfield

**T215X70 R14:** 1/4" tread. \$25/each. 573-764-  
2270.

**AUCTION**  
**February 8**



**J.D. Tractors  
- Machinery**

**800 ROUND  
BALES OF HAY**

**Lots of Balage  
- Dry Hay**

**Alfalfa/Sudan/  
Fescue Mix**

**RUBEN ZIMMERMAN  
VIEW AUCTIONARROWS.COM**

**573-378-4172**  
**25 MILES WEST OF  
JEFFERSON CITY ON ROUTE C**

Meet...

**Shawna Bradley**  
*Your Auction Specialist*



**Call or email me  
today to get your  
next auction  
in Central  
Missouri's  
#1 Shopper!**



**WEEKLY  
TRADER  
MAGAZINE**

office: 417-532-9131 ext. 215 • 417-895-9324  
cell: 417-322-3814 • [shawna@weekly-trader.com](mailto:shawna@weekly-trader.com)

**WOODWORKING EQUIPMENT:** w/SHP  
planer and smaller planer, several different  
items. 573-480-7524/573-480-7523.

**AC 840 DIESEL ARTICULATING  
4-WHEEL DRIVE LOADER:** \$7,250. 573-  
765-4406.

**POOL TABLES:** Installations, moves, recov-  
ers, repairs, accessories, etc. 573-646-1700.

**29 ACRES,** Old house, well, on highway. 15  
miles west of Doniphan, MO. \$40,000. 573-  
714-5779.

**5 MOUNTED TIRES:** size 12-20, \$200.  
417-753-2747, 417-766-1991, Rogersville.

**BUSINESS OPPORTUNITY FOR SALE:**  
Complete, metal "panel forming" equipment,  
and inventory. Customform Willow Springs,  
Sharon Bacon, 417-252-1941.

**30 GAL FUEL TANK:** Fiberglass. \$50.  
417-753-2747, 417-766-1991, Rogersville.

**2000 FORD EXPEDITION:** 4x4, Eddie  
Bauer edition, very dependable, just serviced.  
\$2,700obo. Springfield, 417-848-8754.



# WEEKLY TRADER MAGAZINE

## YOUR AD GOES HERE!

Add **YELLOW** Color  
For An Additional  
**\$3** Per Reader Ad

*All ads will include Phone Number (unless requested to be deleted by advertiser) and City Or Town, Phone Number with Area Code counts as one word. City or Town counts as one word.*

**RATE: 80¢ Per Word. All Classified Ads Require Payment Before Print.**

(1) 80¢	(2) \$1.60	(3) \$2.40	(4) \$3.20
(5) \$4.00	(6) \$4.80	(7) \$5.60	(8) \$6.40
(9) \$7.20	(10) \$8.00	(11) \$8.80	(12) \$9.60
(13) \$10.40	(14) \$11.20	(15) \$12.00	(16) \$12.80
(17) \$13.60	(18) \$14.40	(19) \$15.20	(20) \$16.00
(21) \$16.80	(22) \$17.60	(23) \$18.40	(24) \$19.20
(25) \$20.00	(26) \$20.80	(27) \$21.60	(28) \$22.40
(29) \$23.20	(30) \$24.00	(31) \$24.80	(32) \$25.60
(33) \$26.40	(34) \$27.20	(35) \$28.00	(36) \$28.80
(37) \$29.60	(38) \$30.40	(39) \$31.20	(40) \$32.00

## Place your Classified Ad TODAY!

### 417-532-2800 • 800-665-8875

### Fax: 417-588-7911

### Or Mail To: P.O. Box 192 • Lebanon, MO 65536

For your convenience we accept MasterCard, Visa, Discover or American Express



**DEADLINE FOR CLASSIFIED ADS: FRIDAY 4:00PM!**

Name \_\_\_\_\_

Address \_\_\_\_\_

City \_\_\_\_\_ Email \_\_\_\_\_

State \_\_\_\_\_ Zip Code \_\_\_\_\_ Phone \_\_\_\_\_

Ad Total \$ \_\_\_\_\_ X # Weeks \_\_\_\_\_ = Amount Enclosed \$ \_\_\_\_\_

**ARE YOU KIDDING ME???**-Used double-wide, \$19,900!!!! delivery & set-up, 3 bedroom, 2 bath, Call 573-499-9993 comlumbiadiscounthomes.com

**HAROLD BELL WRIGHT BOOKS:** God and The Groceryman and The Re-Creation of Brian Kent. \$10 each. Lebanon, 417-532-2045 (Leave Phone Number).

97 Freightliner, Cabover, M11 Cummins Engine, 21ft. Steel Bed, FM13 Ditch Witch Pump & Tanks \$7,500

John Deere 420, Wide Front, Recent Overhaul, Good Paint & Tires \$4,800

David Brown 1212 Diesel QA Loader, 2 Sets of Remotes, 65 HP \$5,900

Ford 8N Sherman Transmission, Good Condition \$1,800

Generator PTO 15,000 \$500

Generac Generator 4,000 \$350  
3.8 Ft. Disc \$900

DU-AL Loader QA \$1,400

**STARR TRACTOR • ROGERSVILLE**  
417-753-2747 • 417-766-1991

**SMALL WOOD STOVE.** \$60. 636-239-4124.

**AKC FRENCHIE PUPPIES:** Chocolate Fawn, black-mask, blues, other colors, shots, guarantee. \$1,500 and up. 573-238-3873/573-208-6269.

**BROME HAY FOR SALE:** \$5/square. 573-539-2060.

**CUSTOM SAW MILLING:** Lebanon. 417-533-4607, 417-664-1195.



**Cheyenne Acres**  
Horse & Tack

**BUY - SELL - TRADE**  
by Rolla, MO  
Call For Directions & Availability

**Call Kip**  
**573-368-9402**



**FOR SALE: 146 ACRE M/L FARM** w/0 in Licking, MO: Two metal barns, Three bedroom mobile. \$441,900. Also 83 Acre M/L recreational or mini farm. \$324,900. Call Lena Berg, Red Caboose Real Estate, Connie Culp, Broker, 573-578-2887. redcaboose Realty.com

**15FT BATWING BRUSH-HOG:** Heavy duty. \$4,900. 417-322-0161

**REGISTERED HEREFORD & ANGUS BULLS:** Home raised, Some Show-Me Select Qualified. 573-701-7828. Belgrade

**HARDY WOODBURNING WATER FURNACE.** \$3,500. 630-687-0705.

**HORSE BUCKBOARD:** 8'x32" pneumatic tires. \$575. Niangua, 417-880-0025.



**TASK.  
TASK.  
DONE.**

### RB16 SERIES

#### REAR BLADES

- 20-40 HP 60", 74", 84" Widths
- Cat. 1 hitch
- 7 Forward angles; 3 Reverse angles
- 5 Tilt positions
- 12" Offset left or right
- 14" Moldboard height
- 1/4" Moldboard thickness
- Landscape Rake adaptable

**AGRI ENTERPRISES**

For Outstanding Products & Service

1-1/2 Miles South Of Licking, MO On Hwy 63

**573-674-2203**  
**1-800-653-7152**



www.landpride.com

www.agri-enterprises.com

**LIONEL TRAIN SET:** Steam engine, tender, caboose and other car, track and transformer. \$195. 573-364-7465, Rolla.

**Put more \$\$ in your pocket. Bring your calves to market sooner, eliminate flies, lice and ticks. How??** Prairie Phoenix Cattle Care System. Call LOCAL Dealer at 417-286-3540 or 774-696-2344.

**BOAT TRAILER:** for 14' boat or make good flat bed trailer, good tires. \$125, trade. 417-683-7843, Tecumseh.

**WANTED PINBALL MACHINES.** 573-424-7200.

**BOBCAT 853 DIESEL SKID STEER LOADER :** 57hp, with Bobcat 909 Backhoe Attachment. \$10,950 573-765-4406.

**BUTLER TRAILER:** All steel, tilt bed, tandem axle, pintle hitch. Asking \$1,100 OBO. 314-223-8539, Eureka.

**30 GAL PROPANE TANK:** Has new valve. \$75. 417-683-7843, Tecumseh.

**2002 Pumper Truck**  
**C6500 Series**



• Ready to go!  
• 1,800 gallons  
• Vacuum pressure pump

**\$30,000**

**Truck will not last long! 573-431-1135**

**CASE DC TRACTORS:** One, wide front, PS, 7' rear sickle. \$2,200. One, narrow front, 12' rear sickle. \$1,800. One, narrow front w/3pt lift. \$1,600. 417-848-8754, Springfield.

**DETROLA MUSIC MACHINE:** Plays CD'S, Records, Cassettes, AM-FM Radio, excellent condition, 20x18x12, oak finish, antique look. \$65. 573-364-7465, Rolla.



*The Orr*

Boho Clothing • Smoke Shop • CBD  
Largest Selection of Body Jewelry in SW MO  
Gems • Stones and Crystals

535 East Elm Street | Lebanon, MO 65536  
**417-532-8044 • Theo22420@gmail.com**

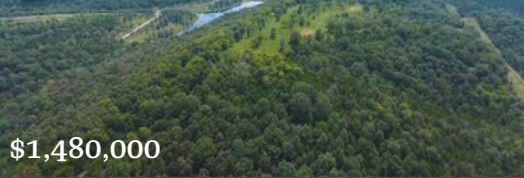


# Land

## For Sale

Branson, MO | 834 Acres

*Stone Mountain Ranch*



\$1,480,000

- One of the largest land offerings available in Branson
- Located just minutes from downtown Branson
- Nestled among some of the most breathtaking scenery in Missouri
- Amazing wildlife and water
- Endless development possibilities: hunting retreat, residence or resort
- There are miles of trails on the property
- Close to many area lakes: Table Rock, Taneycomo and Bull Shoals
- Water is abundant with springs, creeks and small ponds for wildlife
- Roark Creek is live water and flows into Lake Taneycomo
- Black top frontage on Hwy 76 next to Stone Bridge

West Plains, MO | 475 Acres



\$1,349,000

- River bottom farm with lush, well maintained, high tonnage hay and seed production
- Web wire fencing and cross-fencing with concrete corners
- Water in ample supply
- South Fork Spring River is a well-behaved water source, staying in its banks the majority of the time
- Glenwood School District
- 14 miles to downtown West Plains
- Multiple rivers and lakes in the area

Eldridge, MO | 670 Acres



\$1,135,650

- Miles of views of the rolling country side in a secluded location
- Property is surrounded by large land owners
- Great location to Lebanon or Lake of the Ozarks
- Giant bucks and long beards
- Pastures are fenced and cross fenced with excellent fence
- Mature timber and live water
- Property runs 100 head of mama cows
- Property has potential as a cattle ranch, hunting ranch or river retreat
- Priced under appraisal value and very low taxes with motivated seller
- Must see to understand the beauty this property holds

Rolla, MO | 305 Acres



\$1,299,000

- Less than 10 minutes to Rolla
- Approximately one mile of County Road black top frontage and 1/3 mile of gravel frontage
- Multiple ponds
- Some fencing and cross fencing
- 3 waterers
- Abundant deer, turkey and small game
- 1 ½ hours to St. Louis, 10 minutes to Rolla



Missouri's Top Land Specialist in 2014,  
2015, 2016, 2017, 2018 and 2019

WHITETAIL PROPERTIES REAL ESTATE

HUNTING | RANCH | FARM | TIMBER

**Brain Utecht | 417-766-5595**

Brian.Utecht@whitetailproperties.com

WHITETAILPROPERTIES.COM





# ADD ANOTHER CHEVY TO YOUR DRIVEWAY.

**2020 SILVERADO 1500 CREW CAB**  
STK# 33135



FOR WELL-QUALIFIED BUYERS

**0% APR FOR 72 MONTHS<sup>1</sup>**

OR

**\$5,500**  
CASH ALLOWANCE<sup>2</sup>

PLUS

CURRENT GM OWNERS GET  
AN ADDITIONAL  
**\$750** CASH ALLOWANCE<sup>3</sup>

**2020 EQUINOX**  
STK# 33161



FOR WELL-QUALIFIED BUYERS

**0% APR FOR 72 MONTHS**  
+

OR

**\$3,750**  
CASH ALLOWANCE  
ON MOST MODELS<sup>5</sup>

PLUS

CURRENT GM OWNERS GET  
AN ADDITIONAL  
**\$750** CASH ALLOWANCE  
ON MOST MODELS<sup>6</sup>

**\$500** CASH ALLOWANCE

ON MOST MODELS WHEN YOU FINANCE WITH GM FINANCIAL<sup>4</sup>

**2020 TRAX**  
STK# 33168



FOR WELL-QUALIFIED BUYERS

**0% APR FOR 72 MONTHS**  
+

OR

**\$3,000**  
CASH ALLOWANCE

PLUS

CURRENT GM OWNERS GET  
AN ADDITIONAL  
**\$750** CASH ALLOWANCE<sup>3</sup>

**\$500** CASH ALLOWANCE

WHEN YOU FINANCE WITH GM FINANCIAL<sup>1</sup>

PLUS

ELIGIBLE GM CARDMEMBERS GET

**\$1,000**

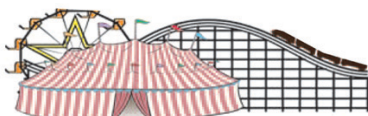
BONUS EARNINGS<sup>9</sup>

THAT'S ON TOP OF MOST OTHER OFFERS



FIND NEW ROADS<sup>7</sup>

CHEVROLET 



**FAIRGROUND**  
*Auto Plaza*  
DRIVEN TO SERVE YOU BEST...

100 Fairgrounds Road  
Rolla, Missouri  
(573) 364-1002

[www.FairgroundGM.com](http://www.FairgroundGM.com)



1 Monthly payment is \$13.89 for every \$1,000 you finance. Example down payment for 2020 Silverado 1500 Crew Cab: 5.6%. Example down payment for 2020 Trax: 3.4%. Must finance with GM Financial. Some customers may not qualify. Not available with lease and some other offers. Take new retail delivery by 2/3/20. See dealer for details. 2 Not available with special financing, lease and some other offers. Take new retail delivery by 2/3/20. See dealer for details. 3 Excludes L models. Must be a current owner of a 2006 model year or newer GM vehicle for at least 30 days prior to the new vehicle sale. Not available with special financing, lease and some other offers. Residential restrictions apply. Take new retail delivery by 2/3/20. See dealer for details. 4 Excludes L models. Monthly payment is \$13.89 for every \$1,000 you finance. Example down payment: 4.6%. Must finance with GM Financial. Some customers may not qualify. Not available with lease and some other offers. Take new retail delivery by 2/3/20. See dealer for details. 5 Excludes L models. Not available with special financing, lease and some other offers. Take new retail delivery by 2/3/20. See dealer for details. 6 Excludes L models. Must be a current owner of a 2006 model year or newer GM vehicle for at least 30 days prior to the new vehicle sale. Not available with special financing, lease and some other offers. Take new retail delivery by 2/3/20. See dealer for details. 7 ©2020 General Motors. All rights reserved.